



Joseph Regenstein, Jr. School

Adult Education

An extensive schedule provides a wealth of choices; instruction by Garden staff and experts in their field ensures every class, workshop, or symposium is an exceptional learning experience.

A “Peek” into Garden Design Classes at the Chicago Botanic Garden

Patricia Kowalczyk (everyone calls her PK) is from a family of prolific gardeners and early on, she marveled that a seed could transform into something beautiful or delicious.

Visually creative by nature and training, PK is a graphic designer and owner of Chicago-based Peekstudio. It was a visit to the Chicago Botanic Garden around ten years ago that inspired PK to blend her love of plants with her eye for aesthetics. “I was amazed not only by the Garden’s breathtaking natural beauty, but also the keen design,” she recalls. “I wanted to take this genius back to my own backyard!”



Graphic designer Patricia Kowalczyk found her niche in the Garden Design Certificate program.

In 2011, PK began the Garden Design Certificate program at the Joseph Regenstein, Jr. School and immediately began incorporating lessons into her own home garden. “The teachers were so excited to share their knowledge and made learning so accessible,” she recalls. “I felt newly empowered to try larger-scale plantings, like deciduous shrubs.”

PK also was happily surprised to find camaraderie among her classmates. “I was so focused on what I’d be learning that it didn’t occur to me I’d also find a whole new set of friends,” she said. “Though we have different backgrounds, I feel like I’ve found my people!”

Highlights

Fergus Garrett: A Conversation on Color

Monday, March 24
See page 52.



Soil Basics

6 Thursdays, March 27 – May 8, and Saturday, April 5
See page 48.

Section and Elevations

3 Mondays, April 21 – May 5
See page 52.

New! Faerie Cottage Workshop

Saturday, April 26
See page 58.



Crabapples

Saturday, May 3
See page 48.

Opening My Medicine Bag: Therapeutic Touch

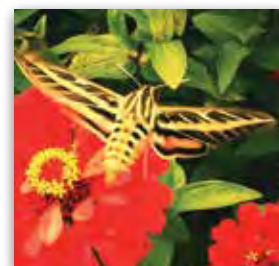
Saturday, May 10
See page 65.

Gardens That Heal: A Prescription for Wellness

Wednesday, May 14
See page 53.

New! iPhone Photography

2 Saturdays, May 31 & June 7
See page 61.



New! Tai Chi Sessions

Beginning Tuesday, Wednesday & Thursday, June 3, 4 & 5
See page 66.



New! Fizzy Drinks: Healthy Alternatives to Soda

Tuesday, June 10
See page 65.

Overview of Courses and Programs

GENERAL INTEREST COURSES

Courses cover myriad topics and provide high-quality learning opportunities for beginning and more advanced gardeners. For specific program questions, contact the registrar at registrar@chicagobotanic.org or (847) 835-8261.

Professional Programs

Professional programs are intensive studies in a particular area of interest for the advanced student. These courses routinely carry continuing education units for various professional organizations. Please direct comments or topic suggestions to Jill Selinger at (847) 835-6849.

Symposia

Symposia, offered throughout the year, provide an in-depth look at a variety of topics. Regional, national, and international speakers provide new perspectives for amateur gardeners, professional horticulturists, landscape designers and architects, scientists, conservationists, and other green-industry professionals. Please direct comments or topic suggestions to Beth Pinargote at (847) 835-8278.

Master Gardener Training Program

In conjunction with University of Illinois Extension, the Garden offers the Master Gardener Training Program. The program covers the basics of horticulture, including classes on woody and herbaceous ornamental plant materials, fruit and vegetable crops, entomology, and pathology.

After completing the training program and 60 hours of volunteer service, participants become certified University of Illinois Extension Master Gardeners. The next on-site program will be in January 2015. Please visit www.chicagobotanic.org/school/mastergardener or call Jill Selinger at (847) 835-6849.

Interested in a customized class? Contact the registrar at registrar@chicagobotanic.org for more information.

Certificate Programs

Learn how a certificate of merit can help you fulfill a dream, start a new career, or delve more deeply into an area of interest. Look for these codes after a course listing, and find a course that may be a new beginning for you!

Certificate programs are offered at many levels to give both beginners and professionals opportunities to improve their expertise and marketability. Details about all of the certificate programs are available at www.chicagobotanic.org/school/certificate. Contact Amelia Simmons-Hurt at certificateprogram@chicagobotanic.org or (847) 835-8293 for further information.

- **Botanical Arts (ART)**
Engage your senses, discover hidden talents, and explore a more personal relationship with plants in this studio art program.
- **Garden Design (GDC)**
Create successful gardens with a solid foundation in plantsmanship and science-based gardening techniques.
- **Midwest Gardening (MGC)**
Discover practical, learner-friendly training on growing plants, plant propagation, and home garden design and you will become a more successful home gardener.
- **Ornamental Plant Materials (OPC)**
Avid amateur gardeners and aspiring horticulture professionals alike will learn identification, cultural requirements, and landscape use for more than 500 ornamental plants that are well suited for northeastern Illinois.
- **Professional Gardener Level 1 and 2 (PGL 1 and 2)**
Hands-on learning can lead to a new career or advancement in the industry, with science-based gardening techniques, plantsmanship, and training in sustainability and planning.
- **Healthcare Garden Design (HGD)**
In this professional development program, attendees will discover the many ways gardens provide verifiable health benefits for patients, staff, and visitors.

- **Horticultural Therapy (HTC)**
This 12-credit-hour accredited program combines online learning with hands-on training, allowing students to gain experience and skills in the use of plant, garden, and nature activities to achieve measurable physical and mental-health outcomes for clients.
- **Focus on Photography (FPC)**
This certificate program enables photographers of all levels to experience the wonders of the natural world, develop and sharpen their powers of observation, and master their technical skills in the studio. This program is your unique opportunity to discover and enhance your creativity, learn from outstanding photography professionals, and enjoy the Garden as your studio. Contact Jill Selinger at certificateprogram@chicagobotanic.org or (847) 835-6849 for more information about the photography certificate.

One-stop registration online. It's so easy! Register for classes, camps, kids' programs, yoga, and more!

See plants in a new way with Botany 1.



Professional Development Programs

Professional development opportunities and inspiration are yours here at the Garden. Landscape design, horticulture, and conservation professionals and others are welcome to attend these outstanding programs.

Mantenimiento de Jardines Finos en Español

Fine Garden Maintenance in Spanish

Esta clase cubrirá los métodos prácticos usados para mantener un jardín perenne en condiciones óptimas. Aprenda cómo y cuando desflorar, podar, estacar, sacar las malas hierbas, fertilizar, poner mulch y regar. También, aprenda a hacer borde apropiado y como mantener el diseño intentado por el diseñador. Vestir apropiadamente para el tiempo ya que parte de la clase puede ser afuera.

This class will cover the practical methods used to keep a garden in peak condition. Learn how and when to deadhead, pinch back, stake, weed, fertilize, mulch, and water. Proper edging and the importance of maintaining the original design intent will also be discussed. Dress for the weather, as part of the class may be outdoors.

Jose Mercado, residential maintenance manager, CLT installation and maintenance, and Gabriel Mercado, senior construction foreman, CLT installation and maintenance, Rosborough Partners, Inc.
 \$74 nonmember; members receive 20% discount
 Friday, March 7, 8 a.m. – noon
 Annex 2

New! SketchUp Fundamentals

Professionals in the landscape architecture, construction, and related industries choose SketchUp because it's the most intuitive, most cost-effective tool of its kind. This course will help participants with SketchUp commands and with developing their own 3D models. Personal laptop required; software available to download from web at no cost. Try our short course to get the basics and fundamentals.

Gary Lehman, RLA, G Studio
 \$149 nonmember; members receive 20% discount
 3 Mondays, March 17 – 31, 6 – 9 p.m.
 Design Studio

Spanish for Landscape Professionals

OPC elective

Have you ever wondered how or what to say to your Spanish-speaking crew in order to get certain tasks done? Do you have problems finding the right Spanish words? Moshe Pinargote will take you through a journey of the culture of Spanish-speaking countries from South America to Mexico. You will learn Spanish vocabulary and the most common phrases for landscape professionals. Time for practice will be available. A Spanish/English translation booklet is included in the fee. The School's CEUs=1.2

Moshe Pinargote, horticulturist,
 Chicago Botanic Garden
 \$249 nonmember; members receive 20% discount
 6 Wednesdays, March 26 – April 30, 6:30 – 8:30 p.m.
 Annex 2

BONSAI WORKSHOPS

All bonsai workshops are taught by bonsai artist Ivan Watters. Workshops are held in the Production Headhouse.

Bonsai: Beginner – Basics and Fundamentals

During this six-week course, discover principles and techniques to appreciate and participate in the art of bonsai. Each session includes a detailed lecture and assistance with design, styling, and wiring.

\$229 nonmember; members receive 20% discount
 6 Sundays, April 6 – May 25, 1 – 4 p.m.
 (no class April 20 & May 18)

Bonsai: Novice – Development Techniques

Ideal for those with considerable familiarity and experience with the fundamentals of bonsai, each session in this six-week course includes a brief lecture, supervised work on trees, and a review and critique of work undertaken.

\$269 nonmember; members receive 20% discount
 6 Wednesdays, April 9 – May 14, 6:30 – 9:30 p.m.

Bonsai: Intermediate – Refinement Techniques

Appropriate for those with knowledge of bonsai concepts and experience with the art beyond the novice level, each session in this six-week course includes a brief lecture, supervised work on trees, and a review and critique of work undertaken.

\$287 nonmember; members receive 20% discount
 6 Saturdays, April 12 – May 24, 9 a.m. – noon
 (no class May 17)

Bonsai: Advanced – Presentation-Quality Efforts

For the student who has completed the beginner, novice, and intermediate courses, this six-week course focuses almost exclusively on supervised work on trees.

\$319 nonmember; members receive 20% discount
 6 Sundays, April 6 – May 25, 9 a.m. – noon
 (no class April 20 & May 18)



Learn from bonsai artist Ivan Watters.

WEEKEND GARDENER SERIES

Are you a new homeowner baffled by your landscape? Are you a beginning gardener who wants to learn basic horticultural skills? This series answers gardening questions and introduces techniques for gardening success. Each course investigates a different topic related to your own lawn and garden.

Success with Trees and Shrubs

Learn all you need to know about growing trees and shrubs and how to be consistently successful in growing all types of woody plants (both deciduous and evergreen). Specific discussion includes matching plants to the site, planting practices, first-year maintenance, and long-term care. This session is of value to all skill levels.

Glenn Grosch, horticulturist and agronomist
\$45 nonmember; members receive 20% discount
Saturday, March 8, 9:30 a.m. – noon
Annex 1

Pruning Principles

Learning the correct technique for pruning is key to maintaining healthy plants. Tim Johnson will introduce you to the principles of pruning, including proper tool use, techniques for pruning trees and shrubs, and the best time to prune both evergreen and deciduous plants. He will also display a variety of good tools for pruning.

Tim Johnson, director of horticulture,
Chicago Botanic Garden
\$37 nonmember; members receive 20% discount
Sunday, March 16, 1 – 3 p.m.
Linnaeus Room

Spring Lawn Care for Homeowners

Here's your chance to learn the basics of lawn care. Using the Garden's holistic turf management program as a model, Tom Fritz explains how to cultivate a thriving lawn while lessening pesticide use. He'll cover turf culture, mowing, aerating, watering, fertilizing and weeding, and insect and disease control. Please dress for the weather.

Tom Fritz, plant healthcare specialist,
Chicago Botanic Garden
\$37 nonmember; members receive 20% discount
Saturday, March 29, 9 – 11 a.m.
Seminar Room, Plant Science Center

Visit www.chicagobotanic.org/school/faculty for faculty biographies.

Chicago Botanic Garden members receive a 20 percent discount on classes.



Even beginners can grow their own vegetables, learn how!

Get Started with Perennials

Learn about choosing the right perennial for the right garden location, and how to combine different perennials to create a lovely and interesting garden that blooms throughout the growing season. Mike Kwiatek discusses pruning and pinching techniques, deadheading and dividing, and other cultural methods to help you keep your garden growing healthy and strong. Come with your questions, because there will be time to discuss any unique situations you have encountered in your perennial garden. A Garden walk is included, so please dress for the weather.

Mike Kwiatek, assistant horticulturist,
Chicago Botanic Garden
\$55 nonmember; members receive 20% discount
Saturday, April 5, 12:30 p.m. – 3:30 p.m.
Annex 2

Vegetable Gardening Basics

Join horticulturist Lisa Hilgenberg to learn the basic techniques and tools required to grow your own vegetables. Site selection, bed and soil preparation, seed sowing, transplanting, and harvesting techniques are just part of what will be covered in this class. This introductory vegetable-growing class is best suited for those with little or no vegetable growing experience. Each student will receive a packet of seeds to grow at home.

Lisa Hilgenberg, horticulturist, Regenstein Fruit & Vegetable Garden, Chicago Botanic Garden
\$37 nonmember; members receive 20% discount
Saturday, April 26, 9:30 – 11:30 a.m.
Fruit & Vegetable Learning Center

Gardening in Containers

Learn how to design and create container gardens for sun and shade, vegetables and herbs, and many others. You will also learn how to keep them healthy and lush all summer long. Each student will receive a plant to try in your containers at home. Dress for the weather, as part of the class will be outdoors.

Heather Sherwood, senior horticulturist,
Chicago Botanic Garden
\$45 nonmember; members receive 20% discount
Saturday, May 3, 1 – 3 p.m.
Annex 1

Summer Garden Maintenance

Proper watering, fertilizing, pruning, edging, deadheading, staking, and mulching practices can make the difference between a healthy, well-kept garden and a landscape that gets ahead of you. You will have a hands-on opportunity to practice what you learn, so bring along a pair of pruners, and dress for the weather.

Tim Johnson, director of horticulture,
Chicago Botanic Garden
\$37 nonmember; members receive 20% discount
Sunday, May 11, 1 – 3 p.m.
Linnaeus Room

Get Started With Roses

This is a great course for the first-time rose grower, or a refresher for the enthusiast. General planting, pruning, protection, and care will be discussed, along with examples of low-maintenance rose varieties suitable for the Chicago area. Dress for the weather, as part of the class will be a Garden walk and talk.

Thomas Soulsby, horticulturist,
Chicago Botanic Garden
\$37 nonmember; members receive 20% discount
Saturday, May 17, 9:30 – 11:30 a.m.
Annex 2

Get Started with Annuals

Annuals can be used in many ways to provide constant color in your flower beds, containers, window boxes, and perennial borders. Learn the most dependable varieties as well as the new and unusual. Topics include soil preparation, plant selection, care and maintenance, and some propagation techniques.

Tim Pollak, outdoor floriculturist,
Chicago Botanic Garden
\$37 nonmember; members receive 20% discount
Sunday, June 1, 1 – 3 p.m.
Linnaeus Room

Horticulture

Horticulture courses help students acquire the information and techniques needed to grow ornamental plants and maintain a healthy garden or lawn.

Orchids: Beyond the Basics

Take an in-depth look at orchid history, diversity, and nomenclature. In addition, Jerry Garner will suggest how to build your orchid collection and will teach some of the finer points of cultivation. Participants are encouraged to bring a few of their plants. This is geared to anyone with some orchid-growing experience.

Jerry L. Garner, Ph.D., horticulturist, consultant, and retired professor of horticulture
\$54 nonmember; members receive 20% discount
Saturday, March 8, 1 – 4 p.m.
Annex 2

The Story of Vanilla

As the most popular flavor in the world, vanilla is at once rich, sweet, and sophisticated, with a flavor and fragrance that sends pure joy to the pleasure centers of the brain. To the Nielsen family, third-generation owners of Nielsen-Massey Vanillas based in Waukegan, Illinois, crafting fine vanillas and flavors since 1907 is their ultimate passion. The Nielsen family will talk about the origin of vanilla; growing, harvesting, and curing vanilla beans; and more. Their presentation includes a smell test of various origins and concludes with a tasting. This course is presented with support from Nielsen-Massey Vanillas.

The Nielsen Family, Nielsen-Massey Vanillas
\$12 nonmember; members receive 20% discount
Thursday, March 13, 1 – 2 p.m.
Linnaeus Room

Chronicle of a Vegetable Garden

Experience a full season of a Chicago vegetable garden with the focus on what to do, why, and when. During the session, you will follow a successful home vegetable gardener from plant selection all the way through harvest (and everything in between). Join us for a great opportunity to sharpen existing gardening skills and perhaps learn some new ones.

Glenn Grosch, horticulturist
\$37 nonmember; members receive 20% discount
Saturday, March 22, 9:30 – 11:30 a.m.
Annex 2

Backstage Pass: Flowering Spring Celebrities

Join Tim Pollak for an exclusive tour through the Chicago Botanic Garden's greenhouses and nursery. Be the first to see which spring annuals will appear in the 2014 annual display beds, hanging baskets, containers, and hanging hayracks. You will also preview some of the indoor displays for the Antiques & Garden Fair and glimpse the start of fall mums.

Tim Pollak, outdoor floriculturist,
Chicago Botanic Garden
\$37 nonmember; members receive 20% discount
Saturday, March 22, 1 – 3 p.m.
Meet at Rice Plant Resource Center

POULTRY PALOOZA!

Join urban chicken consultant Jennifer Murtoff for a day of workshops on how to successfully raise and enjoy chickens in your backyard!

Register for both sessions at once and receive a ten percent discount.

Raising Backyard Chickens

This class is designed for curious people who are considering raising backyard chickens, as well as for those who already have their own birds and who want to learn more! Come learn about local laws, how to raise chicks, care for adult birds, and keep your neighbors happy!

Jennifer Murtoff,
Home to Roost Urban Chicken Consulting
\$37 nonmember; members receive 20% discount
Sunday, March 23, 10 a.m. – noon
Annex 2

Chicken Coop Basics

If you're getting chicks this spring, you will need to know how to build a safe and comfortable home for them! In this class, you'll learn about the basic needs of backyard birds (they're not fussy, really, but there are some things you need to know!). Discover the essential components of a coop, learn what to avoid when choosing construction materials, get important construction tips, and see examples of different coop styles.

Jennifer Murtoff,
Home to Roost Urban Chicken Consulting
\$37 nonmember; members receive 20% discount
Sunday, March 23, 1 – 3 p.m.
Annex 2

Pansy Baskets

In this popular workshop, make two moss-lined wire baskets filled with pansies and other spring beauties to brighten your porch or patio. Pansies can withstand cool spring temperatures and provide an early splash of color in your garden. Please bring gloves. All other materials are provided.

Heather Sherwood, senior horticulturist,
Chicago Botanic Garden
\$59 nonmember; members receive 20% discount
Wednesday, March 26, 6:30 – 8:30 p.m.
Annex 1

Start your garden plants early by seed.

Hydrangeas

Learn all you ever wanted to know about hydrangeas! This program will cover all aspects of successfully growing hydrangeas. A detailed discussion will include hardiness issues and pruning techniques by species, as well as how to manage bloom color—plus you'll see some great photos of each of the species in full bloom.

Glenn Grosch, horticulturist and agronomist
\$45 nonmember; members receive 20% discount
Thursday, March 27, 6:30 – 9 p.m.
Linnaeus Room

Seed Starting Primer

Seed starting is a fun way to expand your garden's potential. In this class, we will go over all the basics, including what seeds to start, choosing the proper location, lighting, containers, and soil mixes to ensure your success. Bill Shores will also cover the importance of keeping heirloom and unique plant varieties going through seed saving and starting, and will offer resources on this aspect for participants. Demonstration and hands-on activity are included.

Bill Shores, professional grower and garden consultant
\$37 nonmember; members receive 20% discount
Wednesday, April 2, 6:30 – 8:30 p.m.
Brushwood House, Ryerson Woods, Deerfield, Illinois

Growing Salads Indoors

Learn to grow organic salad greens at home, whether you have garden space or not! Professional gardener Bill Shores, who has grown specialty greens for more than a decade and currently manages chef Rick Bayless's market garden, will treat participants to a visual feast of microgreens. Then he will demonstrate how to plant the seeds in growing trays, and discuss maintenance and harvesting techniques.

Bill Shores, professional grower and garden consultant
\$37 nonmember; members receive 20% discount
Saturday, April 5, 9:30 – 11:30 a.m.
Seminar Room, Plant Science Center





Bill Shores demonstrates growing salad greens indoors.

Small Space Food Gardens

Bill Shores will offer an overview of techniques to produce food organically in small urban/suburban spaces. Through photos and garden planting graphics, you will gain an understanding of the process of designing a successful food garden. Topics include efficient use of in-ground space, intensive and succession planting techniques, raised bed gardens, season extension, indoor gardens, and building and maintaining healthy soils.

Bill Shores, professional grower and garden consultant

\$37 nonmember; members receive 20% discount
Saturday, April 5, 1 – 3 p.m.

Seminar Room, Plant Science Center

Living Pansy Wreath Workshop

Welcome the arrival of spring with a pansy wreath to brighten your front door! In this class you will create a lush, colorful living wreath by planting a moss-lined wire frame with pansies and ivy. Please bring an apron, rubber gloves, and scissors. All other materials are included in the fee.

Karen Thomson, topiary designer, Thomson Topiaries

\$79 nonmember; members receive 20% discount
Wednesday, April 16, 9:30 a.m. – noon

Annex 2

Organic Gardening: A Fresh Approach

Are you interested in organic gardening? This fresh approach to organic gardening will focus on fundamental horticultural practices as they apply to a successful organic garden experience. The presentation will cover the “what and why” of organics followed by a detailed discussion of specific horticultural practices both in the area of plant nutrition and pest management. There will also be a brief discussion of organics from a retail consumer perspective.

Glenn Grosch, horticulturist and agronomist

\$45 nonmember; members receive 20% discount
Saturday, April 26, 12:30 – 3 p.m.

Fruit & Vegetable Learning Center

Growing a Cook's Garden

If you have a spot in your garden, balcony, or deck that receives more than six hours of direct sunlight, you can grow fresh herbs and vegetables. We'll cover how to grow the best essential ingredients for your kitchen: tomatoes, onions, peppers, squash, garlic, and leafy greens. In this class, you'll learn the basics of soil preparation, planting in pots, plant selection, protecting your harvest from pests, extending the crops from spring through fall, and ideas for food preparation.

Nina Koziol, garden writer

\$37 nonmember; members receive 20% discount
Saturday, May 3, 10 a.m. – noon

Fruit & Vegetable Learning Center

Ireland's Generous Nature: The Past and Present Uses of Wild Plants in Ireland

Born in Kilkenny, Ireland, Peter Wyse Jackson, Ph.D., has undertaken extensive research on the use of wild plants in Ireland. His new book, *Ireland's Generous Nature*, is the first-ever comprehensive account of the historical and present-day uses of wild plant species in Ireland. It records a wealth of traditional knowledge that has largely been lost or is quickly disappearing. This lively and scholarly lecture shows how plants have been used in virtually every aspect of human life: food, clothes, medicine, construction, drinks, veterinary medicine, human health and beauty, and even death. Scientific and historical facts are intertwined with myth, superstition, and tales that offer an unrivaled account of the rich heritage of Irish plants. Books will be available for purchase and signing after the lecture.

Peter Wyse Jackson, Ph.D., president,
Missouri Botanical Garden, St. Louis, Missouri

\$19 nonmember; members receive 20% discount
Tuesday, April 29, 4 – 5 p.m.

Fairchild Room

Distinctive Annuals

Tired of the same old annuals? Join us for a discussion and colorful demonstration of many different and rare annuals worthy of our gardens and containers. Join Tim Pollak as he talks about the best plants to try and where to find some of these distinctive annuals. Many are heirlooms from our grandparents' gardens, all of which are fantastic additions to complement the tried-and-true annuals available in the spring and summer. Pollak also demonstrates how to care for and overwinter some of these plants so you can enjoy them year after year.

Tim Pollak, outdoor floriculturist,

Chicago Botanic Garden

\$37 nonmember; members receive 20% discount

Thursday, May 8, 6:30 – 8:30 p.m.

Garden View Room, Visitor Center

New! Made for the Shade Hanging Basket

Do you admire those fabulous hanging baskets you see at the Chicago Botanic Garden? Learn some tricks of the trade during a discussion of different styles, materials, and plant ideas used at the Garden. Maintenance tips will also be discussed. Then you'll plant your own basket to enjoy at home. Bring gloves, if you prefer. All other materials are included in the fee.

Heather Sherwood, senior horticulturist,

Chicago Botanic Garden

\$87 nonmember; members receive 20% discount

Thursday, May 15, 6:30 – 8:30 p.m.

Annex 1

The Emerald Ash Borer: What You Need To Know

2014 Emerald Ash Borer Management Partnership

By now, you've likely heard about the emerald ash borer and the disastrous impacts the insect is having on trees throughout our region. But how can you identify an ash tree? And what exactly is this tiny insect doing to cause such a big problem? Join us for a no-nonsense look at the emerald ash borer. Using the Chicago Botanic Garden's multiple-phase emerald ash borer management plan as a case study, we'll consider what you can do to preserve your trees. An outdoor demonstration of tree treatment will be included as part of the class.

Tom Tiddens, plant healthcare supervisor,
Chicago Botanic Garden, and Dan Klindera,
district manager, SavATree

Registration is free; register in advance to reserve your space.

Friday, May 16

10 a.m. – noon

Fairchild Room

or

Saturday, May 17

10 a.m. – noon

Garden View Room, Visitor Center

Registration fee is waived and refreshments provided thanks to the generous support of SavATree.

FOUR SEASONS OF BEAUTY 2014: THE CHICAGO BOTANIC GARDEN CONTAINER SERIES

This series of workshops and Garden walks features the diversity and creativity of four seasons of Chicago Botanic Garden container gardens. Each season you will explore the Garden grounds with Nancy Clifton and discover an array of striking plants, interesting color and texture combinations, and unique container arrangements. Clifton will then help you create a seasonal container for your sun or partial shade patio or porch.

All workshops are taught by Nancy Clifton, program specialist at the Chicago Botanic Garden. Register for all four sessions at once and save ten percent.

Spring Containers at the Garden

Tour the Garden's spring containers and collect ideas for your own. Then create a container with plants that can tolerate the varying spring temperatures and a full-sun to partial-shade location. Pansies, forced bulbs, and other spring treasures may be used. A spray of branches gives them a finishing touch. Please bring gloves.

\$87 nonmember; members receive 20% discount
Tuesday, April 22, 10 a.m. – noon
or 6:30 – 8:30 p.m.
Annex 1

Summer Containers at the Garden

Enjoy a tour featuring the summer containers at the Garden. Then prepare a warm-season mixed container suitable for a sun or partial shade location. Your container may include annuals, perennials, herbs, and decorative foliage. Please bring gloves.

\$87 nonmember; members receive 20% discount
Tuesday, June 17, 10 a.m. – noon
or 6:30 – 8:30 p.m.
Annex 1

Autumn Containers at the Garden

Take a Garden walk to view the Garden's fall containers. Then create a cool-season mixed container with a variety of plants suitable for a full-sun or partial-shade location. Your container may include annuals, perennials, herbs, decorative foliage, cool-season vegetables, ornamental grasses, a decorative vine, and gourds. Please bring gloves.

\$87 nonmember; members receive 20% discount
Tuesday, September 9, 10 a.m. – noon
or 6:30 – 8:30 p.m.
Annex 1

Winter Containers at the Garden

Explore the winter containers at the Garden and learn ways to extend your own containers into the winter season. Then prepare a container with fresh-cut evergreen boughs and berried or brightly colored branches. Please bring gloves and pruners.

\$87 nonmember; members receive 20% discount
Tuesday, December 2, 10 a.m. – noon
or 6:30 – 8:30 p.m.
Annex 1

HORTICULTURE CERTIFICATE OF MERIT PROGRAM

FREE Information Session

Curious about our certificate programs? Want to learn how our programs can help you fulfill a dream, start a new career, or simply enjoy a new interest? Bring your questions to this FREE session. This session will cover Midwest Gardener, Ornamental Plant Materials, Professional Gardener, and Garden Design programs. First-time students attending this session will receive \$20 off their first Certificate core course (restrictions apply). Please register in advance to save your space.

Wednesday, June 25, 7 – 8 p.m.
Linnaeus Room

Botany 1, Spring Session

OPC, MGC, PGL 1, PGL 2 and GDC requirement

Why, botanically speaking, is a tomato a fruit? What is the difference between a fern and a moss? Come join us in Botany 1 to learn the answers to these questions and more! In this course we will explore such subjects as the importance of plants to our lives; plant taxonomy and classification; and the life cycles, distinguishing features, diversity, and identification of major groups of plants.

TBD
\$337 nonmember; members receive 20% discount
6 Mondays and 6 Wednesdays, March 3 – April 9
2:30 – 4:30 p.m.
or
6:30 – 8:30 p.m.
Plant Science Lab, Regenstein Center

Growing Ornamental Plant Materials

MGC requirement

Learn the basic techniques and some special tips needed for establishing and maintaining a healthy garden in the Midwest. Some of the many topics to be covered include planting, pruning, water and turf management, weed and pest control, maintenance of new landscapes, and specific methods for growing herbaceous and woody plant groups such as bulbs, ericaceous plants, container plants, and others. Gain hands-on experience in the Garden.

Tim Johnson, director of horticulture,
Chicago Botanic Garden
\$312 nonmember; members receive 20% discount
7 Tuesdays, March 18 – April 29, 6:30 – 8:30 p.m.
Annex 2
and
2 Saturdays, March 22 and April 26, 9 a.m. – noon
Annex 1

*Learn to incorporate bulbs into
your landscape.*

Hardy Bulbs

OPC, PGL 1, PGL 2, GDC requirement

Explore the many bulbs that brighten the spring, summer, and fall garden. You will learn to identify more than 60 hardy bulbs, corms, and tubers. Bloom sequences, cultural requirements, and bulb selection will also be discussed. After completing this course, you will have the confidence and knowledge to use a wide variety of bulbs to enhance your clients' gardens or your own.

Jill Selinger, manager, continuing education,
Chicago Botanic Garden
\$287 nonmember; members receive 20% discount
7 Tuesdays, March 18 – May 6, 6:30 – 8:30 p.m.
(no class April 8)
Alsdorf Auditorium

Garden Walks (select one)
6 Thursdays, March 20 – May 1, 9 – 11 a.m.
(no class April 10)
or
6 Saturdays, March 22 – May 3, 9 – 11 a.m.
(no class April 12)
Optional Study CD \$20

Chic New Perennials

OPC elective

Perennial lovers are always on the lookout for what is on the gardening horizon. This lecture will introduce you to many striking newcomers, as well as to underused knockouts that will steal the show. The School's CEUs= 0.3

Kerry Mendez, garden designer and lecturer
\$74 nonmember; members receive 20% discount
Saturday, March 22, 9 a.m. – noon
Linnaeus Room



Spanish for Landscape Professionals

OPC elective

See page 40 for details. The School's CEUs=1.2

6 Wednesdays, March 26 – April 30, 6:30 – 8:30 p.m.
Annex 2

Soil Basics, Spring Session

MGC, PGL 1, PGL 2, GDC requirement

Soil is an irreplaceable natural resource that affects plant selection and growth. Learn to maintain healthy soil; use compost, fertilizers, soilless and potting mixes, and other amendments. Discover how water cycles through a garden and affects soils and plants. Course fee includes a professionally analyzed test of your garden soil.

Ellen Phillips, horticulture educator
\$337 nonmember; members receive 20% discount

6 Thursdays, March 27 – May 8, 6:30 – 9 p.m.
(no class April 10)

Annex 2

and

Saturday, April 5, 1 – 4 p.m.

Annex 1

Gardening Techniques: Session C

PGL 1, PGL 2, GDC requirement

Students will be introduced to professional gardening through a combination of lecture and hands-on activities. Focus is on acquiring solid gardening skills, learning about a variety of techniques, and developing the ability to determine best practices. Topics range from plant selection to the identification and control of weeds and other horticultural practices. Prerequisite: Botany 1.

John Eskandari, horticulture educator,
Urban Plantsman LLC

\$312 nonmember; members receive 20% discount
6 Saturdays, March 29 – May 3, 7:30 – 10:30 a.m.

(April 12 off-site)

Annex 2

Vibrant Viburnums

OPC elective

Viburnums are great multi-season plants that have grown in popularity. Discover what species and varieties might be right for your landscape. Care and potential problems will also be discussed. The School's CEUs=0.3

Sharon Yiesla, horticulturist, owner,
Sharon Yiesla Horticultural Presentations

\$62 nonmember; members receive 20% discount

Wednesday, April 16, 6:30 – 8:30 p.m.

Plant Science Lab, Regenstein Center



Flowering trees capture the magic of spring.

Botany 2

PGL 2 and GDC requirement

How do seeds germinate and develop into mature plants? How do plants move water up through their roots to their topmost branches? This course will explore subjects such as the plant cell; anatomy and growth of roots, stems, and leaves; photosynthesis; and the symbiotic association of plant roots with beneficial fungi and bacteria. Prerequisite: Botany 1.

TBD

\$337 nonmember; members receive 20% discount

6 Mondays and 6 Wednesdays, April 21 – June 2

(no class May 26)

6:30 – 8:30 p.m.

Plant Science Lab, Regenstein Center

Magnolias

OPC elective

The genus *Magnolia* is a complex group of plants with a large native range. Several of the species readily hybridize, producing new and interesting selections. The newest group of hybrids is the hardy yellow magnolia. New hybrids pop onto the market each year, creating an increasing palette of beautiful flowering trees for the Midwest. Learn more about the genus *Magnolia* and the best choices for the Midwest garden. The School's CEUs=0.3

Mark Zampardo, Ph.D., horticulture educator,
Chicago Botanic Garden

\$74 nonmember; members receive 20% discount

Wednesday, April 23, 9 a.m. – noon

Plant Science Lab, Regenstein Center

Crabapples

OPC elective

There is a crabapple for nearly every situation imaginable. This course focuses on several different *Malus* species and numerous cultivars for the Chicago area, including proven performers and the newest introductions. In addition to characteristics such as size, form, flower color and fruit set, topics will include cultural requirements, pests, diseases and landscape use. Dress for the weather, as a Garden walk is planned. The School's CEUs=0.3

Mark Zampardo, Ph.D., horticulture educator,
Chicago Botanic Garden

\$74 nonmember; members receive 20% discount

Saturday, May 3, 11 a.m. – 2 p.m.

Plant Science Lab, Regenstein Center

Small Flowering Trees

OPC, PGL 1, PGL 2, GDC requirement

Small flowering trees are a critical component of nearly every garden and landscape. This course covers approximately 40 genera and many more species and cultivars that thrive in our region. Identification, cultural information, aesthetic qualities, and landscape uses will be emphasized. After completing this course, you will be able to select appropriate trees to add interest and depth to your garden and landscape projects.

Mark Zampardo, Ph.D., horticulture educator,
Chicago Botanic Garden

\$287 nonmember; members receive 20% discount

7 Tuesdays, May 13 – July 1, 6:30 – 8:30 p.m.

(no class May 20)

Garden Walks (select one)

6 Thursdays, May 15 – June 26, 9 – 11 a.m.

(no class May 22)

or

6 Saturdays, May 17 – June 28, 9 – 11 a.m.

(no class May 24)

Alsdorf Auditorium

Optional Study CD \$20

Ornamental Grasses

OPC elective

Ornamental grasses can provide beauty nearly all year long. The variety of size, shape, and color make them a wonderful addition to any garden. Learn how you can incorporate these successfully into your landscape. The School's CEUs=0.3

Sharon Yiesla, horticulturist, owner,
Sharon Yiesla Horticultural Presentations
\$62 nonmember; members receive 20% discount
Thursday, May 15, 6:30 – 8:30 p.m.
Plant Science Lab, Regenstein Center

Lilacs

OPC elective

Learn more about the genus *Syringa*. The species ranges from small shrubs to medium-sized trees. The beautiful flowers are generally fragrant and plants are hardy and easy to grow. Lilacs are tolerant of a wide range of soil types including alkaline soils. A walk around the Garden to view lilacs in bloom is included. The School's CEUs=0.3

Mark Zampardo, Ph.D., horticulture educator,
Chicago Botanic Garden
\$62 nonmember; members receive 20% discount
Tuesday, May 20, 6:30 – 8:30 p.m.
Garden View Room, Visitor Center

Growing Fruit Trees and Berries

MGC requirement

Discover new as well as traditional fruit trees and berries suited for the Midwest. Learn techniques and tips to produce a bountiful harvest, whether your garden is large or small. Choice of varieties, site selection, soil preparation, and planting will be discussed. Explore ways to integrate the beauty of fruit trees and berries into any garden area.

Ellen Phillips, horticulture educator
\$224 nonmember; members receive 20% discount
6 Thursdays, May 29 – July 10, 6:30 – 9 p.m.
Saturday, June 28, offsite, 1 – 4 p.m.
Annex 2

Organic Pest and Disease

OPC elective

Are you looking for an environmentally friendly and sustainable way to treat pest and disease challenges in your garden? Come learn about handling common pest and disease issues that you may encounter in your ornamental plantings and vegetable garden. You will come away with possible new ways to observe and identify what might be “bugging” your landscape and corrective steps that you can take to minimize or eliminate the issues. The School's CEUs=0.3

Lynn Bement, The Organic Garden Coach
\$62 nonmember; members receive 20% discount
Wednesday, June 4, 6:30 – 9 p.m.
Garden View Room, Visitor Center



Learn to grow beautiful fruit and berries at home.

Healthy Gardens

OPC elective

Would you like to create a landscape that is more resistant to insect and disease challenges? Come learn how to build up your soil organically. Regardless of whether you are starting from scratch with new construction or working with an older, existing landscape, come explore a guaranteed approach to building your soils in a healthy, environmentally friendly, and sustainable way! The School's CEUs=0.3

Lynn Bement, The Organic Garden Coach
\$62 nonmember; members receive 20% discount
Wednesday, June 11, 6:30 – 9 p.m.
Garden View Room, Visitor Center

Recognizing Sedges in the Field

OPC elective

See details on page xx. The School's CEUs=0.6
Saturday, June 21, 9 a.m. – 4 p.m.
Annex 1

Ground Covers and Vines

OPC, PGL 1, PGL 2, GDC requirement

Learn more about the fascinating world of climbers, trailers, and spreaders. This course will focus on identification techniques, ornamental qualities, and cultural traits of nearly 60 ground covers and vines. Plants studied will include the common English ivy and vinca as well as lesser-known cultivars of clematis and coral-bells.

William Moss, horticulture educator
\$287 nonmember; members receive 20% discount
7 Tuesdays, July 8 – August 19, 6:30 – 8:30 p.m.
Alsdorf Auditorium

Garden Walks (select one)
6 Thursdays, July 10 – August 14, 9 – 11 a.m.
or
6 Saturdays, July 12 – August 16, 9 – 11 a.m.
Optional Study CD \$20
Alsdorf Auditorium

Visit www.chicagobotanic.org/school/faculty for faculty biographies.

Chicago Botanic Garden members receive a 20 percent discount on classes.

Nature Studies

The Chicago region contains a wide range of plants and animals living in different types of natural communities, from woodlands to wetlands, from prairies to savannas.

Spring Bird Walk

Join bird expert Alan Anderson to explore the best spots in the Garden for locating late-winter bird residents and the early migrants of spring. Each walk is approximately one to two hours long. Dress for the weather, and bring binoculars and a field guide, if you have one.

Alan Anderson, research committee chairman, Chicago Audubon Society
\$19 nonmember; members receive 20% discount
Saturday, March 22, 7:30 – 9 a.m.
or
Saturday, April 19, 7:30 – 9 a.m.
or
Saturday, May 24, 7:30 – 9 a.m.
Meet at Visitor Center

Woodcock Walk!

American woodcocks have been called sky dancers, because the males perform an interesting display in the air during breeding season. A short presentation about these interesting birds will include a close-up look at woodcock specimens and a special demonstration of woodcock young when alarmed. We will then walk to the forest preserve to watch and listen for woodcocks and other birds that are active at dusk. Bring a flashlight and wear appropriate clothing. Please pencil in March 23 as a rain date. A map will be sent.

Steve Bailey, ornithologist, Illinois Natural History Survey, and Sheryl DeVore, author, *Birds of Illinois*, and chief editor, *Meadowlark*, journal of the Illinois Ornithological Society
\$24 nonmember; members receive 20% discount
Saturday, March 22, 6:30 – 8:30 p.m.
Middlefork Savanna, Lake Forest, Illinois

New! Marsh Bird Walk

This program will introduce you to the more common and uncommon species of marsh birds, including rails, bitterns, gallinules, snipe, marsh wrens, and other marsh-dwelling birds that can be found in the wetland-rich areas of the greater Chicago area. If you have never heard or seen many of these secretive and interesting birds, this is the program and hike to introduce you to them. You should wear a pair of hiking boots to walk over to the edge of the marsh. A map will be sent.

Steve Bailey, ornithologist, Illinois Natural History Survey
\$24 nonmember; members receive 20% discount
Saturday, April 12, 7:30 – 9:30 a.m.
Almond Marsh Forest Preserve, Grayslake, Illinois

New! Learning Spring Bird Song

There are many bird species that you almost never see, but you can hear virtually all of them. The evening program will show you a sampling of various spring bird species, as well as let you hear some of the more common and likely birds that we will hope to see and hear on the morning bird walk. We will also offer some common mnemonic phrases to assist you in learning the calls/songs of some of the species, like the Eastern towhee's "drink-your-tea." Wear hiking shoes and clothes for wandering the trails at Ryerson.

Steve Bailey, ornithologist, Illinois Natural History Survey, and Sheryl DeVore, author, *Birds of Illinois*, and chief editor, *Meadowlark*, journal of the Illinois Ornithological Society
\$74 nonmember; members receive 20% discount
Thursday, May 1, 7 – 9 p.m.
and
Saturday, May 3, 7:30 – 9 a.m.
Brushwood House, Ryerson Woods, Deerfield, Illinois

A Walk in the Wildflowers

Learn about our native flora while enjoying the beauty of Reed-Turner Woodland Nature Preserve. Class starts indoors with an overview of spring wildflowers and an emphasis on those species that are most adaptable for use in the home garden. We'll then head outdoors for a stroll to see what's blooming along the preserve trails. Please dress for the weather and feel free to bring a notebook, camera, and/or binoculars. A map will be sent.

Sarah Schultz, steward, Reed-Turner Woodland
\$24 nonmember; members receive 20% discount
Sunday, May 4, 1 – 3 p.m.
Reed-Turner Woodland Nature Preserve, Long Grove, Illinois

Introduction to Bird-Watching

If you want to become a birder, join this class to learn the basics. On Thursday, you will learn about binoculars, how to use a field guide, and the field marks used to identify common birds of the Chicago area. During the Saturday bird walk, participants will try out their newly acquired skills. Bring binoculars, if you have them, and dress for the weather.

Jim Steffen, ecologist, Chicago Botanic Garden
\$74 nonmember; members receive 20% discount
Thursday, May 15, 6:30 – 9 p.m.
Annex 2
and
Saturday, May 17, 7:30 – 9 a.m.
Meet at McDonald Woods Entrance Shelter

New! Natural History of the Spring Oak Woodland

On this walk, participants will learn about the plants and animals found in oak woodlands in spring. Go off trail to learn something about the common spring wildflowers, sedges, common mosses, and trees and shrubs, along with animals great and small. Dress for possible brambles and poison ivy.

Jim Steffen, ecologist, Chicago Botanic Garden
\$24 nonmember; members receive 20% discount
Thursday, May 15, 9 a.m. – noon
Meet at McDonald Woods Entrance Shelter

Landscapes for Nature and Wildlife

Learn to attract wildlife with design ideas and plants selected for use as food, shelter, and water for birds, butterflies, and small mammals. Discussion will include specific plants that may be introduced into a traditional landscape to attract and support wildlife in your garden. A Garden walk will be included, so please dress for the weather.

John Raffetto, horticulture educator
\$37 nonmember; members receive 20% discount
Thursday, May 29, 1 – 3 p.m.
Annex 2

The Native Oaks

The mighty oaks (*Quercus*) have been a signature species in Midwest landscapes for thousands of years. This class covers the different species and varieties within their respective ecosystems along with their landscape usage and culture. Oak morphology and physiology of the various species will be covered along with basic identification of the varieties.

John Raffetto, horticulture educator
\$37 nonmember; members receive 20% discount
Tuesday, June 10, 1 – 3 p.m.
Garden View Room, Visitor Center

Recognizing Sedges in the Field

OPC elective

Many of the grasslike plants you encounter in native habitats in the Chicago region and elsewhere are not actually grasses. Although similar looking, they are members of an entirely different family of plants. In this course you will study *Carex*, the largest and most diverse genus of the sedge family. Learn about the taxonomy, structure, and ecology of this challenging group. This advanced course is for students who have already completed Botany I or are familiar with the use of taxonomic keys. Students must have a 10X loop, hand lens, and small millimeter ruler. Be prepared for walking in the woods; wear long sleeves and long pants, and bring insect repellent and sunscreen. You may wish to purchase a copy of *Field Guide to Wisconsin Sedges* by Andrew Hipp. Please bring a sack lunch. The School's CEUS=0.6

Jim Steffen, ecologist, Chicago Botanic Garden
\$124 nonmember; members receive 20% discount
Saturday, June 21, 9 a.m. – 4 p.m.
Annex 1

Garden Design

With a variety of courses ranging from site analysis and construction to garden art and history, students learn the principles of garden design and how design relates to the environment.

New! Design Tips for Knockout, Easy-Care Gardens

Gorgeous, low-maintenance gardens are no accident. Learn proven design tricks for sensational gardens that will be the talk of the neighborhood. Topics include selecting great plants, incorporating focal points, vertical interest, sustainable practices, natural repellants, the how and when of using fertilizer, and more.

Kerry Mendez, garden designer and lecturer
\$37 nonmember; members receive 20% discount
Saturday, March 22, 1 – 3 p.m.
Linnaeus Room

Fergus Garrett: A Conversation on Color

Join us for a rare opportunity to hear Fergus Garrett, renowned plantsman and head gardener at Great Dixter, as he discusses the thought process involved

in putting together vibrant plant combinations where saturated and unsaturated colors are mixed and contrasting colors are used to give maximum effect. This along with undulating shapes, contrasting textures, strong architectural features, and a sense of adventure result in highly stimulating gardens that make Great Dixter a powerful and vibrant

experience. After his presentation, local plantsman Roy Diblik will join him to further the discussion.

Fergus Garrett, head gardener and CEO at Great Dixter, United Kingdom
\$37 nonmember; members receive 20% discount
Monday, March 24, 2 – 4 p.m.
Alsford Auditorium



PAINTING YOUR GARDEN WITH PLANTS: SUN AND SHADE

Register for both sessions at once and save ten percent.

Designing the Sunny Border

The well-designed border wears a combination of perennials, annuals, and shrubs that provide three seasons of color and winter interest. This class will discuss how to artfully combine plants with an emphasis on the use of color, texture, and form. Whether you are a new gardener or have an established border that could use updating, this class is for you.

Nina Koziol, garden writer
\$37 nonmember; members receive 20% discount
Saturday, March 29, 10 a.m. – noon
Linnaeus Room

Designing the Shade Garden

A garden shaded by trees or buildings is often a challenge for the gardener who is faced with low light levels, tree roots, and soil that is often dry. This class provides solutions and ideas for artful plantings that can help you create effective combinations that consider color, texture, and form.

Nina Koziol, garden writer
\$37 nonmember; members receive 20% discount
Saturday, March 29, 1 – 3 p.m.
Linnaeus Room

The “Know Maintenance” Approach to Perennial Gardens

Roy Diblik connects well-performing perennials for our region to maintenance and planting style. His design concept includes stylized perennial garden grids placing plants that live well together. Diblik calls this style “Know Maintenance” gardening, a fresh and innovative approach to easy-care gardens. He has put this style into place in his designs for many influential gardens, including the Sullivan Arch at the Art Institute and the Oceanarium at the Shedd Aquarium. Diblik will discuss his concepts and share images of plants and gardens that illustrate this style. His new book will be available for sale and signing.

Roy Diblik, plantsman and co-owner, Northwind Perennial Farm
\$37 nonmember; members receive 20% discount
Thursday, April 24, 9:30 – 11:30 a.m.
Garden View Room, Visitor Center

Garden Walk with Roy Diblik

Join Roy Diblik for an exclusive walk and talk as he discusses the concepts of plant communities, the best performing perennials for our region, and the importance of proper planning to assure a successful garden experience. Please dress for the weather. Class size will be limited.

Roy Diblik, plantsman and co-owner, Northwind Perennial Farm
\$27 nonmember; members receive 20% discount
Thursday, April 24, 1 – 2:30 p.m.
Meet at the Visitor Center

GARDEN DESIGN CERTIFICATE OF MERIT PROGRAM

FREE Information Session

Curious about our certificate programs? Want to learn how our programs can help you fulfill a dream, start a new career, or simply enjoy a new interest? Bring your questions to this FREE session. This session will cover Midwest Gardener, Ornamental Plant Materials, Professional Gardener, and Garden Design programs. First-time students attending this session will receive \$20 off their first Certificate core course (restrictions apply). Please register in advance to save your space.

Wednesday, June 25, 7 – 8 p.m.
Linnaeus Room

New! SketchUp Fundamentals

GDC elective
See page 40 for details The School's CEUs=0.9
\$149 nonmember; members receive 20% discount
3 Mondays, March 17 – 31, 6 – 9 p.m.
Design Studio

Principles of Garden Design, Spring Session

PGL 2 and GDC requirement

Apply knowledge and skills developed in previous design courses toward an in-depth understanding about spatial properties of landscape materials and their application to design principles. Weekly discussions and projects will emphasize the components of three-dimensional spaces and their application to the development of refined concept design plans and construction level drawings. Prerequisites: Graphics, Introduction to Professional Practice.

Tony Wasemann, ASLA, senior landscape designer, Scott Byron & Co.
\$337 nonmember; members receive 20% discount
8 Wednesdays, April 16 – June 4, 6:30 – 9 p.m.
Design Studio
and
2 Saturdays, April 19 and 26, 11 a.m. – 2 p.m.
Linnaeus Room

Section and Elevations

GDC elective

This course will focus on the development of section and elevation drawings that may be used to complement plan drawing presentations. Sections and elevations are useful presentation tools that communicate design intent. This course will focus on the development of hand-drawing techniques to measure, draw, and embellish presentation-quality section and elevation drawings. The School's CEUs=0.75

Jodi Mariano, RLA, senior associate, Teska Associates, Inc.
\$149 nonmember; members receive 20% discount
3 Mondays, April 21 – May 5, 6:30 – 9 p.m.
Seminar Room, Plant Science Center

Gardens That Heal: A Prescription for Wellness

Healthcare Garden Design Certificate Seminar
GDC elective

In a healthcare environment, gardens provide a sense of order, safety, and privacy for those coping with illness. During this seminar, industry leaders will present the latest research demonstrating the benefits of healthcare gardens, while providing an introduction to the tools needed to effectively design, manage, and evaluate such gardens. Fee includes morning coffee and lunch. This program is registered with the American Society of Landscape Architects for continuing education credit. *Registrations made after Thursday, May 8, are not eligible for the lunch option. ASLA CEUs=0.625 or 6.25 hours

\$149, or \$129 before April 4
Wednesday, May 14, 9 a.m. – 5:30 p.m.
Alsodorf Auditorium

Healthcare Garden Design

Professional development certificate program
GDC elective

This eight-day program includes case studies, group projects, field trips, lectures, and instruction from experts from healthcare garden-related professions. Working in multidisciplinary teams that reflect the real world of healthcare garden design, your learning will be reinforced through tours of healthcare facilities in greater Chicago. Registration includes eight-day program fees, course materials, seminar program, transportation to field sites, and select meals. The Joseph Regenstein, Jr. School of the Chicago Botanic Garden is registered with the American Society of Landscape Architects as an LA CEST™-approved provider. ASLA CEUs=4.0 or 40 hours

Wednesday – Wednesday, May 14 – 21
9 a.m. – 6 p.m. (ending times may vary)
Linnaeus Room

Early registration fee paid/postmarked by April 4:
\$2,995
Fee after April 4: \$3,495

Hardscape Basics

PGL 2 and GDC requirement

Apply knowledge and skills toward a working understanding of hardscape elements as they relate to garden design. Discussions and projects will focus on basic elements of hardscape structures, including paving, landscape lighting, garden walls and structures, and their application to landscapes. Prerequisites: Graphics, Introduction to Professional Practice, Principles of Garden Design.

Paul Laiblin, project manager and senior estimator,
Scott Byron and Co.
\$337 nonmember; members receive 20% discount
10 Thursdays, May 22 – July 31, 6:30 – 9 p.m.
(no class July 3)
Design Studio
Saturday, June 14, offsite, 1 – 4 p.m.

Introduction to Grading and Drainage

PGL 2 and GDC requirement

Apply knowledge and skills toward a working understanding of basic grading and drainage concepts as they relate to design. Discussions and projects will include basic earth forms and drainage patterns in residential landscapes. Prerequisites: Graphics, Introduction to Professional Practice, Principles of Garden Design.

Tony Wasemann, ASLA, senior landscape designer,
Scott Byron & Co.
\$337 nonmember; members receive 20% discount
8 Wednesdays, June 11 – July 30, 6:30 – 9 p.m.
Design Studio
and
2 Saturdays, July 12 and 19, 11 a.m. – 2 p.m.
Plant Science Lab, Regenstein Center

Botanical Arts and Humanities

Throughout history, plants and images of plants have been woven into the arts—painting, literature, and photography. The beauty of botanical arts courses is that they encompass a wide variety of topics, from photography to calligraphy, botanical illustration to papermaking. In introductory and higher-level courses, students have the opportunity to express their creative flair while sharing time with others in an enjoyable setting.

Treewhispers: Handmade Paper Art Workshop

Spend the day exploring the artistic papermaking process used in the *Treewhispers* exhibition. You will begin the workshop with an introduction to the stunning handmade paper rounds used in the *Treewhispers* project. Then, roll up your sleeves and create your own paper rounds under the guidance of the visionary for the exhibit, artist Pamela Paulsrud. This will be a fun and invigorating workshop suitable for all.

Pamela Paulsrud, artist and creator of *Treewhispers*
\$125 nonmember; members receive 20% discount
Friday, March 7, 10 a.m. – 4 p.m.
Plant Science Lab, Regenstein Center

Tile Garden Marker Workshop

Create six personalized garden markers embellished with identifying plant images and names. Janet Austin will guide you through an artistic process using high fire stoneware slabs, plant pressings, and lettering to make these unique and durable markers. Finished pieces will be glazed in a lovely verdigris finish then kiln-fired and ready for you to pick up in several weeks.

Janet Austin, artist
\$124 nonmember; members receive 20% discount
Tuesday, March 18, 10 a.m. – noon
Annex 2



Create six original plant markers for your garden.

Visit www.chicagobotanic.org/school/faculty for faculty biographies.

Chicago Botanic Garden members receive a 20 percent discount on classes.

Beginning Watercolor

Watercolor is a delightfully fun medium! In this class, you'll learn a variety of watercolor techniques, including washes and how to make a range of textures on paper, plus some color theory to get you started. No prior experience is necessary. A supply list will be sent.

Patsy Welch, artist and educator
\$237 nonmember; members receive 20% discount
6 Tuesdays, March 18 – April 29, 1 – 3:30 p.m.
(no class April 8)
Design Studio

EDIBLE GELATIN ART

Called “the new cake,” this popular, 100 percent edible dessert is exciting, delicious, light, beautiful, and gluten-free. In these workshops, you will learn to transform clear, glass-like gelatin into stunning 3D floral designs that are gorgeous enough to put on display, but are actually edible art made to enjoy and share. All instruction, recipes, and supplies provided, including ideas for adapting the dessert to sugar-free and/or lactose-free lifestyles.

Edible Gelatin Art: Orchids

This workshop will provide you with ample time to practice and perfect two realistic orchid designs, one *Phalaenopsis* and one *Cattleya*, suspended into individual gelatin molds that you will take home. The vibrant colors and stunning details of these flowers create an effect that tastes as good as it looks. Bring a sack lunch to enjoy during break. Registration also includes entrance to the orchid show after class.

Angelica Aguilar, gelatin artist and owner,
Blossoms By Angelica

\$149 nonmember; members receive 20% discount

Saturday, March 15, 10 a.m. – 2:30 p.m.

Plant Science Lab, Regenstein Center



Edible Gelatin Art: Rose and Daisy

This workshop will provide you with ample time to practice and perfect an elegant rose in full bloom and a cheerful daisy design that is suspended into individual gelatin molds you will take home. This art form is a unique way to enjoy a delicious and light dessert as we welcome the summer months. Bring a sack lunch to enjoy during break.

Angelica Aguilar, gelatin artist and owner,
Blossoms By Angelica

\$149 nonmember; members receive 20% discount

Saturday, May 17, 10 a.m. – 2:30 p.m.

Seminar Room, Plant Science Center

Edible Gelatin Art: Butterfly and Sunflower

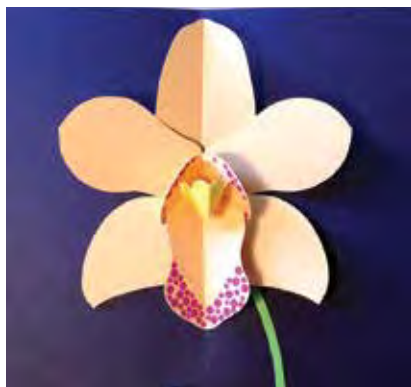
In this class you will create a refreshing, 100 percent edible, gelatin “cake” featuring a delicate butterfly and striking sunflower design. Your finished product would be a perfect addition to a Father’s Day picnic or party! Please bring a butane hand torch for creating the butterfly. Bring a sack lunch to enjoy during break. Registration also includes entrance to the Butterflies & Blooms exhibition after class.

Angelica Aguilar, gelatin artist and owner,
Blossoms By Angelica

\$149 nonmember; members receive 20% discount

Saturday, June 14, 10 a.m. – 2:30 p.m.

Seminar Room, Plant Science Center



Pop-Up Paper Orchid Workshop

Celebrate the 2014 Orchid Show by making gorgeous pop-up orchids! After creating a simple pop-up card with white card stock, you will visit the Orchid Show and take photos or make quick sketches of a specific orchid you would like to recreate in pop-up. With photo or sketch in hand, you will return to the workshop. Using card stock in a wide range of colors, you will build a second card, customizing the shapes and using color to make the bloom your own. No experience necessary; just bring a camera or sketchbook, any dry media (colored pencil, pastel, etc.) you might like to use, and your love of orchids! All tools are supplied for this workshop, but feel free to bring your own if you prefer working with them.

Shawn Sheehy, pop-up engineer and author

\$62 nonmember; members receive 20% discount

Saturday, March 8, 9 a.m. – noon

Plant Science Lab, Regenstein Center



Pop-Up Paper Veggies Workshop: Part 1

Do you love the beauty of an heirloom vegetable as much as the taste? Here’s your chance to create a gorgeous collection of pop-up vegetable cards, just in time for the planting season. Featured vegetables include the Jackson wonder bush bean, golden stem chard, and the beefsteak tomato. All participants will leave with a collection of five or six cards, as well as an introduction to the fundamentals and materials of pop-up engineering. No experience is necessary, but binding and/or sewing skills will speed your progress. All tools are supplied for this workshop, but feel free to bring your own if you prefer working with them.

Shawn Sheehy, pop-up engineer and author

\$125 nonmember; members receive 20% discount

Saturday, April 5, 9 a.m. – 4 p.m.

Green Roof Conference Room, Plant Science Center



Pop-Up Paper Veggies Workshop: Part 2

Return for a second day of beautiful (and more complex!) heirloom vegetables. Featured among the more sophisticated structures are the Minnesota sweet pumpkin, golden bantam twelve-row sweet corn, and Brunswick cabbage. Students may register for part two if they have had any previous pop-up classes with Sheehy. All tools are supplied for this workshop, but feel free to bring your own if you prefer working with them.

Shawn Sheehy, pop-up engineer and author

\$125 nonmember; members receive 20% discount

Sunday, April 6, 9 a.m. – 4 p.m.

Green Roof Conference Room, Plant Science Center



Mosaic Workshop

Discover the joy and beauty of mosaic art in the pique assiette tradition. Pique assiette, or “broken plates,” incorporates a wonderful blending of color, form, and texture. This mosaic folk art can be found in many cultures and is popular today as a way to recycle a favorite piece of china or broken heirloom. Work under the guidance of Bonnie Arkin to complete a unique mosaic from shards of china, ceramic, or glass. A supply list is given at the first class, but you can start collecting dishes now!

Bonnie Arkin, artist and designer
 \$149 nonmember; members receive 20% discount
 6 Tuesdays, March 18 – May 6, 7 – 9 p.m.
 (no classes April 15 & 22)
 Annex 1 or
 6 Tuesdays, May 13 – June 17, 7 – 9 p.m.
 Annex 1

Calligraphy and Floral Decoration

Learn the art of beautiful writing and the flourishes of botanical illustration: it’s a match made in heaven! Beginners, start with the basics of calligraphy and floral decoration for invitations and cards. More experienced students, polish your skills and complete a project. A supply list will be sent.

Judith Joseph, artist and educator
 \$287 nonmember; members receive 20% discount
 6 Thursdays, March 20 – May 1, 12:30 – 3:30 p.m.
 (no class April 10)
 Design Studio

Rejuvenated Jewelry

Inspired by the little treasures you save and love, we will cleverly combine old and new elements to create spectacular jewelry. Bring your special and sentimental keepsakes, single earrings, buttons, charms, chains, family photos, and found objects and let Bonnie Arkin inspire your creativity. We can create wonderful new designs from vintage treasures. You will learn to solder, wire wrap, and string. Arkin has many examples to share and resources for treasure hunting. A supply list will be sent.

Bonnie Arkin, artist and designer
 \$149 nonmember; members receive 20% discount
 6 Thursdays, March 20 – May 1, 7 – 9 p.m.
 (no class April 10)
 Annex 1 or
 6 Thursdays, May 22 – June 26, 7 – 9 p.m.
 Annex 1

FIBER ARTS WORKSHOPS

Come learn how to felt while hearing stories of a knitter, shepherd, and small business owner! Natasha Lehrer, of Esther’s Place Fiber Arts Studio in Big Rock, Illinois, will share her love of fiber arts and inspire you to create!

Register for both sessions at once and receive a ten percent discount.

New! Needle-Felted Mother Sheep and Lamb

Celebrate spring with this sweet felted pair that makes a wonderful Mother’s Day gift! A mother and her lamb, complete with cute spring bows and lots of character! Transform locally produced wool into adorable three-dimensional figurines using needle-felting techniques.

\$49 nonmember; members receive 20% discount
 Monday, March 31, 10 a.m. – noon
 Linnaeus Room

New! Needle-Felted Flower Fairy

Join us to make a 4-inch fairy that is full of charm, complete with beautiful alpaca hair, sparkly wings, and your choice of color.

\$49 nonmember; members receive 20% discount
 Monday, March 31, 1 – 3 p.m.
 Linnaeus Room

Japanese Ink Painting

Sumi-e, the ancient art of Japanese ink painting, requires no previous painting experience. Individualized instruction will be provided for students of all levels. Beginners will learn to use Oriental painting equipment to paint classic nature subjects. A supply list will be sent.

Kay Thomas, artist
 \$249 nonmember; members receive 20% discount
 8 Thursdays, April 3 – May 22, 6:30 – 8:30 p.m.
 Design Studio

New! Cigar-Box Faerie Cottage Workshop

Do you believe in faeries? Make your own cigar-box faerie house in this whimsical workshop. We will be making a room that has all of the comforts your faerie friend might want, including a bed, dining area, cabinets, sink, books, windows, and anything else your imagination dreams up. Bring things that inspire you to add and trade, like fabric, lace, beads, buttons, tiny images and views (for your window), shells, etc. All other materials will be supplied.

Tatiana Katara, artist and educator
 \$149 nonmember; members receive 20% discount
 Saturday, April 26, 10 a.m. – 2 p.m.
 Garden View Room, Visitor Center

New! Drawing & Painting our Way Through History

In this class we will study and explore the history of botanical art. We will put into practice what we learn from the masters and the significant historical trends of this exquisite art form. This will be a studio class of drawing and painting, and each student will have the opportunity to explore the various media and techniques involved. This class is open to beginning, intermediate, and advanced students.

Derek Norman, artist and director,
 Midwest Center for Botanical Documentation
 \$312 nonmember; members receive 20% discount
 6 Fridays, May 2 – June 13, 1 – 4 p.m.
 (no class May 23)
 Design Studio

New! The Art of the Wildflower

Take advantage of the spring woodland wildflower setting at the beautiful Reed-Turner Preserve. Students (beginning, intermediate, and advanced) will learn how to make traditional botanical field sketchbook studies using the medium of their choice (pencil, pen and ink, colored pencil, watercolor, and/or gouache). Students will learn to capture botanical detail and characteristics as a preliminary step to creating more finished botanical works of art. Students will also learn how to use a microscope (for botanical detail) and proportional dividers (for accuracy). Since this class will be conducted in the field, please dress accordingly. A supply list and map will be sent.

Derek Norman, artist and director,
 Midwest Center for Botanical Documentation
 \$249 nonmember; members receive 20% discount
 Wednesday & Thursday, May 7 & 8,
 9:30 a.m. – 4:30 p.m.
 Reed-Turner Woodland Nature Preserve,
 Long Grove, Illinois



Make a cigar-box faerie house in a whimsical workshop.

Watercolor: Painting the Natural World

This course addresses ways to express the beauty of nature in watercolor. Each week will focus on a specific technique, such as ways to mix greens or show natural textures, with a goal of a more satisfying painting experience. In the last two weeks, we will focus on such landscape techniques as how to use composition, color, and focus to create the impression of a beautiful natural place. A supply list will be sent.

Judith Joseph, artist and educator
 \$299 nonmember; members receive 20% discount
 6 Thursdays, May 8 – June 12, noon – 3 p.m.
 Design Studio

Adventure, Travel, Plein Air Painting!

Full-day Watercolor Workshop

Have you found yourself in some breathtaking location, clicking your camera, while thinking to yourself, “I should be painting this right now”? This class will build your confidence to capture the magical beauty of the great outdoors through plein-air painting. Whether you are a highly accomplished painter or just beginning, you will get helpful advice on technique, composition, and equipment. David Dallison will share his specific color palette and methods for building up a painting through composition, tone, color, and layering. In addition, you will learn how to develop a lightweight, portable system that will allow you to paint anywhere, anytime. Lunch is on your own.

David Dallison, professional artist
 \$99 nonmember; members receive 20% discount
 Tuesday, June 3, 9 a.m. – 4 p.m.
 Meet at Visitor Center

Watercolor 2

For students who have completed Beginning Watercolor, we will continue to learn various techniques and color theory while exploring different ways to combine light, composition, color, and textures in watercolor painting. A supply list will be sent.

Patsy Welch, artist and educator
 \$237 nonmember; members receive 20% discount
 6 Wednesdays, June 18 – July 23, 1 – 3:30 p.m.
 Design Studio

BOTANICAL ARTS CERTIFICATE OF MERIT PROGRAM

Annual Student Botanical Arts Exhibition

Registration Deadline Monday, July 28

Get your paintbrushes ready and your pencils sharpened! Registration is now open for the 2014 *Student Botanical Art Exhibition*. Students of all levels are welcome, but you must register and submit your entries by July 28 to participate. Please review detailed information on requirements, procedures, and submission due dates prior to registration.

chicagobotanic.org/school/botart_exhibition

Botanical Drawing 2

ART requirement

Continue to build your drawing skills with advanced graphite techniques, light and dark media on toned paper, and carbon dust. Prerequisite: Botanical Drawing 1.

Marlene Hill Donnelly, scientific illustrator, Chicago Botanic Garden and The Field Museum
 \$287 nonmember; members receive 20% discount
 6 Saturdays, March 1 – April 5, 9 a.m. – noon
 Design Studio

Expressive Watercolor

ART requirement, expressive track

Explore the fluid beauty of the watercolor medium. Each session will progress to a more controlled “found” finish. There will be a strong emphasis on values and design. Prerequisite: Watercolor 1 or equivalent.

Thomas Trausch, artist, TWSA master status
 \$287 nonmember; members receive 20% discount
 6 Saturdays, March 1 – April 5, 1 – 4 p.m.
 Design Studio



The Chicago Botanic Garden has a practice carillon in the Regenstein Center, which makes it possible for the Garden to offer instruction in carillon performance. Wylie Crawford, the Garden’s resident carillonneur, will begin teaching in late March. For more information, please call (847) 835-8261.

Color Mixing

ART requirement

Learn to mix accurate, exciting color including the vivid, specific hues of flowers, the bright and subdued greens of leaves, and the deep, subtle colors in shadows. We’ll make charts for permanent reference and then apply this knowledge to paint flowers and leaves from live specimens. We will work in watercolor, but exercises apply to all media.

Marlene Hill Donnelly, scientific illustrator, Chicago Botanic Garden and The Field Museum
 \$287 nonmember; members receive 20% discount
 6 Sundays, March 2 – April 6, 9:30 a.m. – 12:30 p.m.
 or
 6 Tuesdays, March 4 – April 8, 6 – 9 p.m.
 Design Studio

Colored Pencil Drawing Course

ART elective

Start with the fundamentals then delve into working with dry and wet media of colored pencil. Develop your drawing skills through extensive color exploration of value, intensity and temperature. Learn dry applications, layering, washes, and color mixing techniques. Work from real life and nature rather than from photographs. Demonstration and explanations are presented at the start of each class. Individual guidance and instruction is given to each student. The School’s CEUs=1.8

Priscilla Humay, freelance artist, CPSA
 \$287 nonmember; members receive 20% discount
 6 Mondays, April 7 – May 12, 6 – 9 p.m.
 Design Studio

Color Mixing 2

ART elective

Through exercises and demonstrations, this class will explore the more advanced aspects of color such as simultaneous contrast, color vibration, composing with color, mixing neutrals, and atmospheric perspective. Watercolor will be the primary medium but students may also work in hard pastel or colored pencil. The School’s CEUs=1.2

Marlene Hill Donnelly, scientific illustrator, Chicago Botanic Garden and The Field Museum
 \$287 nonmember; members receive 20% discount
 6 Tuesdays, April 15 – May 20, 6 – 9 p.m.
 Design Studio

Grisaille Technique in Botanical Painting: A Workshop with Wendy Hollender

Visiting artist program
ART elective

Join Wendy Hollender to learn the techniques outlined in her book *Botanical Drawing in Color: A Basic Guide to Mastering Realistic Form and Naturalistic Color*. Students will learn how to use a grisaille technique for undertones in a neutral color and then how to layer color on top to create depth, using watercolor pencils in combination with dry colored pencils. This technique is very immediate and materials are simple, allowing the artist to work easily in multiple locations, and it is especially useful for work in the field. Students will become familiar with the techniques and practice on simple forms such as fruits using colored pencils. Then they will progress to more complex forms such as flowers. The School's CEUs=1.2

Wendy Hollender, botanical artist, author, and instructor
\$312 nonmember; members receive 20% discount
Saturday & Sunday, April 26 & 27, 9 a.m. – 4 p.m.
Design Studio

Pen and Ink Scientific Illustration

ART elective

Learn the basic steps to create an accurate scientific illustration using natural plant materials together with the relevant herbarium sheets. Learn to understand the structure of the subject specimen and its plant parts, and then to draw and then ink. Explore the creation of an aesthetically pleasing and readable composition. The School's CEUs= 1.8

Derek Norman, artist and director,
Midwest Center for Botanical Documentation
\$287 nonmember; members receive 20% discount
6 Saturdays, May 3 – June 7, 1 – 4 p.m.
Design Studio

Composition

ART requirement

Students at all levels will learn the components of fine botanical composition in this studio class. Students will explore composition, design, and execution.

Derek Norman, artist and director,
Midwest Center for Botanical Documentation
\$287 nonmember; members receive 20% discount
6 Mondays, June 2 – July 7, 6 – 9 p.m.
Design Studio

Watercolor 1

ART requirement

Students will build skills, starting with basic color mixing and paint-handling exercises. Students will progress to rendering textures and form in color and using paint-layering techniques to achieve a naturalistic style.

Nancy Halliday, freelance artist and naturalist
\$287 nonmember; members receive 20% discount
6 Tuesdays, July 22 – August 26, 6 – 9 p.m.
Design Studio

Visit www.chicagobotanic.org/school/faculty for faculty biographies.

Chicago Botanic Garden
members receive a 20
percent discount on classes.

Photography

Discover the joy of nature and garden photography with the Garden as your studio! Advance your artistic and technical skills in classes and workshops for students of all levels led by outstanding photography professionals.

Garden and Travel Photography

The best souvenirs of your trip are photographs of the buildings and gardens you visit no matter where your travels take you. Combining buildings and gardens often presents a challenge. Learn how to create lead-lines in addition to using light, angle, and time of day to optimize your pictures. Classes will be held at the Garden and other locations. A checklist and syllabus will be sent before the first class. Prerequisite: Beginning Photography class or general camera competence. Requirements: Digital camera (no tablets or cell phones, please) and tripod strongly encouraged.

Jack Carlson, certified professional photographer
\$225 nonmember; members receive 20% discount
4 Tuesdays, May 13 – June 3, 9 a.m. – noon
Design Studio

New! iPhone Photography

There are hundreds of photography apps available for iPhones, and many of them have similar features. This class will explore some of the better-known apps along with instruction on how to use them for nature photography. The first class will go over the basics of iPhone photography along with fieldwork for a portion of the day. The second class will examine the photos taken during week one and how they can be enhanced, manipulated, or altered to create a personal statement. iPhones are mandatory.

Tobin Fraley, photographer
\$79 nonmember; members receive 20% discount
2 Saturdays, May 31 & June 7, 10 a.m. – noon
Garden View Room, Visitor Center

Sharpen your photography skills with expert instructors.





Capture the beauty of early spring with your camera.

New! Intro to Photography for Persons with Limited Mobility

Limited mobility should not impede your pursuit of this engaging hobby. Learn the basics of working with your individual camera, along with ways to adapt your equipment and methods to compensate for your physical disability. The first class will focus on camera basics in addition to specific suggestions for adaptive devices. The following two classes will combine classroom instruction with field experience. The instructor will contact each student in advance of the class to assess individual needs and answer questions. Requirements: Digital camera (no phones or pads, please). Class size limited to eight students. **Note:** A limited number of ECVs (motorized scooters) are available for rental at the Garden; reservations should be made in advance by calling the Information Desk at (847) 835-8208. Manual wheelchairs are also available at no charge.

Jack Carlson, certified professional photographer
\$119 nonmember; members receive 20% discount
3 Mondays, June 9 – 23, 10 a.m. – noon
Garden View Room, Visitor Center

FOCUS ON PHOTOGRAPHY CERTIFICATE OF MERIT PROGRAM

Macro Photography in the Greenhouse

FPC elective

Get away from the winter blues and come explore the Greenhouse. This class will introduce you to a world of detail often not noticed. The succulents, tropical blooms, and Greenhouse color will serve as our natural laboratory. Each class will consist of learning new macro techniques followed by trips into the Greenhouses to practice new skills and artistic elements. Designed for intermediate photographers comfortable with basic photography techniques. Digital SLR, macro lens, and tripod required. The School's CEUs = 1.25

Julia Franzosa, fine art photographer
\$225 nonmember; members receive 20% discount
5 Wednesdays, March 19 – April 23, 2 – 4:30 p.m.
(no class April 9)
Design Studio

New! Photographing Wildflowers

FPC fundamental course, nature and wildlife track

Students will learn about capturing images of both native wildflowers and garden flowers. The emphasis will be on color and tonal balance, close-ups, backgrounds, natural lighting, and composition. Wildflowers change quickly in the spring, so each week will offer a new array of subjects. A portion of each class will be held outside, so please dress for the weather. Digital SLR cameras plus a standard and macro lens are mandatory along with a general working knowledge of your camera's functions.

Tobin Fraley, photographer
\$229 nonmember; members receive 20% discount
5 Thursdays, March 20 – April 24, 9:30 a.m. – noon
(no class April 10)
Design Studio

Photographing Signs of Spring

FPC elective

Spring is often subtle in its arrival. This class will present the camera and lens settings that are best to use when capturing those small hints of the changing season. Learn to recognize which perspectives will best highlight these small-scale buds and shoots. Macro or close-focusing lens quite helpful, but not required. Prerequisites: Beginning Digital Photography or approval of instructor. Class limited to digital cameras only. No phones or pads, please. The School CEUs=1.2

Jack Carlson, certified professional photographer
\$225 nonmember; members receive 20% discount
3 Sundays, March 23 – April 6, 8 a.m. – noon
Plant Science Lab, Regenstein Center

Intermediate Photography Portfolio Workshop

FPC requirement, fine art track

The Garden will serve as a natural laboratory as we explore a variety of photographic techniques to take you from an ordinary snapshot to botanic art. Heavy emphasis will be put on finding your own artistic style while advancing your photographic skill set and beginning to create your own botanic art portfolio. This course is designed for intermediate photographers. You will walk away with your own set of professionally produced images. Digital SLR cameras are mandatory.

Dianne Kittle, fine art photographer
\$374 nonmember; members receive 20% discount
8 Mondays, March 24 – May 12, 9 – 11:30 a.m.
Design Studio

New! Basics of Editing – Advanced Photoshop

FPC elective

Take your Photoshop skills to the next level and learn some more exciting editing techniques. This class is project-oriented, learning black and white with color accents, HDR, panorama, and people extraction. There will also be more digital photography tips. Requirements for the course are a laptop computer with Adobe Photoshop Elements or Adobe Photoshop CS5 installed and a digital camera. Prerequisite: Photoshop 1 & 2, or approval of instructor. The School's CEUs = 1.0

Iris Allen, freelance photographer and instructor
\$187 nonmember; members receive 20% discount
4 Mondays, March 24 – April 14, 1 – 3:30 p.m.
Annex 2

Beginning Digital Photography

FPC requirement

This course will help beginners and enthusiasts grasp the techniques and principles of photography. By the end of class, participants will be confident in using their camera's manual settings. Course requires a digital SLR camera. No previous experience is required.

Jack Carlson, certified professional photographer
\$225 nonmember; members receive 20% discount
4 Wednesdays, March 26 – April 23, 9 a.m. – noon
(no class April 9)
Plant Science Lab, Regenstein Center
or
4 Saturdays, May 10 – June 7, 9 a.m. – noon
(no class May 24)
Design Studio

New! Visual Storytelling and Bookmaking*FPC elective*

Learn the art of creativity, writing, and storytelling in the Garden. Begin the day with an inspirational exercise. Write a themed-approach photography book comprised of your portfolio of connected images. Develop a style of design and write poetically about your photographic art. We will review prizewinning blurb photography books and then design a book, step by step, that can be published for others or treasured by your family. You will need a laptop computer and have a portfolio ready for critique. The School's CEUs=1.2

Dianne Kittle, fine art photographer and Jeri Love, professional writer
\$225 nonmember; members receive 20% discount
4 Wednesdays, April 16 – May 7, 9 a.m. – noon
Garden View Room, Visitor Center

Black-and-White Photography: A Study of Shadows and Texture*FPC elective*

In addition to a brief study of the history of black-and-white photography, students will explore the digital creation of images beyond color, looking into the shadows and textures that lay beneath nature's color spectrum using plants and objects found at the Chicago Botanic Garden. Tonality and dynamic range will be the main topics although we will also review the use of black-and-white imaging in mainstream photography. Digital SLR cameras are mandatory. A portion of each class will be held outside, so please dress for the weather. The School's CEUs=1.25

Tobin Fraley, photographer
\$229 nonmember; members receive 20% discount
5 Thursdays, April 17 – May 15, 1 – 3:30 p.m.
Garden View Room, Visitor Center

Basics of Editing – Photoshop I*FPC requirement option*

The Chicago Botanic Garden is a spectacular place to take photographs. Make your photographs even better with Adobe Photoshop Elements—a user-friendly photo editor that uses the same concepts as the full version of Photoshop. Learn how to make your images better through the use of selection tools, layers, and smart brushes. Play with some artistic options that can inspire abstractions. Requirements for the course are a laptop computer with Adobe Photoshop Elements or Adobe Photoshop CS5 installed and a digital camera.

Iris Allen, freelance photographer and instructor
\$187 nonmember; members receive 20% discount
4 Mondays, April 28 – May 19, 6:30 – 9 p.m.
Garden View Room, Visitor Center

Documenting Nature*FPC requirement, nature and wildlife track*

The emphasis of this class will be on composition and storytelling through the use of still photography in a natural setting. We will cover depth of field, offset imaging, cropping, and the use of triptychs. We will also take comprehensive look at understanding what the camera sees compared with our own natural visual biases. A portion of each class will be held outside, so please dress for the weather. Digital SLR cameras are mandatory along with a general working knowledge of your camera's functions.

Tobin Fraley, photographer
\$229 nonmember; members receive 20% discount
5 Thursdays, May 1 – June 29, 9:30 a.m. – noon
Garden View Room, Visitor Center

New! Capturing Sunrise Scenes with Your Camera*FPC elective*

Photographs taken at sunrise are some of the most romantic and dramatic of their kind due to the clear, clean light. Though it means getting out very early in the morning, students will learn how to use our largest direct source of light to create photographs with the highlights, angles, and shadows found only at this time of day. A checklist will be sent before class. Students should bring tripod. Class limited to digital cameras; no phones or pads, please. The School's CEUs = 0.6

Jack Carlson, certified professional photographer
\$119 nonmember; members receive 20% discount
2 Saturdays, May 10 & 17, 5 – 8 a.m.
Design Studio

Textures and Patterns in Nature Photography*FPC fundamental course, fine art track*

Develop your artistic vision by using natural and artificial light to discover textures and patterns at the Chicago Botanic Garden. With your SLR camera's flash, flashlights, the sun, and other light sources, you will capture textures to create a 3D world showing the rhythm of nature. This intermediate class will include an opportunity to use strobe lighting, light tables, and backdrops for the study of textures in composition. Class will include lecture, critique, and time in the Garden.

Dianne Kittle, fine art photographer
\$225 nonmember; members receive 20% discount
4 Wednesdays, May 14 – June 4, 1 – 4 p.m.
Design Studio

Advanced Photography Portfolio Workshop*FPC requirement, fine art track*

This course is designed for photographers comfortable with the skills and techniques necessary to produce portfolio-quality images. Must be comfortable with aperture and shutter speed. With skills honed, the class will explore art direction, composition, and elements within the art of photography. Time in the classroom is immediately followed by time outdoors dedicated to practicing new artistic components. You will walk away with your own set of professionally produced images, which will be ready to submit for the 2014 Student Botanical Photography Exhibition. Digital SLR mandatory. Prerequisite: Intermediate Photography Portfolio Class.

Dianne Kittle, fine art photographer
\$374 nonmember; members receive 20% discount
8 Mondays, June 2 – July 21, 9 – 11:30 a.m.
Design Studio

Basics of Editing – Photoshop 2*FPC elective*

Take the next step and learn even more about Adobe Photoshop. This more advanced class will further your knowledge of selections and layers, allowing you to do some serious photo enhancement and manipulation. We will tackle some interesting projects such as black and white with color accents, old photo restoration, and abstract art creation. Requirements for the course are a laptop computer with Adobe Photoshop Elements or Adobe Photoshop CS5 installed and a digital camera. Prerequisite: Photoshop 1, or approval of instructor. The School's CEUs = 1.0

Iris Allen, freelance photographer and instructor
\$187 nonmember; members receive 20% discount
4 Mondays, June 2 – 23, 6:30 – 9 p.m.
Garden View Room, Visitor Center

New! Photographing Butterflies and Blooms*FPC elective*

Join Jack Carlson for a rare opportunity to capture the colorful world of the Butterflies & Blooms exhibition. This intermediate – advanced level class meets before the exhibition opens to the general public, so cameras and tripods are most welcome. Participants should have a working knowledge of camera controls and lens settings. *Close-focusing/macro lens and tripod strongly suggested.* We will meet for a brief orientation, and then proceed to the exhibition. The School's CEUs=0.25

Jack Carlson, certified professional photographer
\$59 nonmember; members receive 20% discount
Thursday, June 5, 7:30 – 9:30 a.m.
or
Sunday, June 8, 7:30 – 9:30 a.m.
Garden View Room, Visitor Center

Wellness

Discover the many possibilities offered at the Chicago Botanic Garden for nurturing and healing the body, mind, and spirit.

Getting the Most Out of Your CSA

Have you signed up for a CSA, (community supported agriculture), and you are not sure how to work with the produce you receive? Are you worried you might get too many vegetables? Learn how to maximize your CSA bounty and not to waste a single fruit or vegetable so you get the most for your money while supporting your local farmer. You will also receive a handout with recipes, tips, and tricks for using and preserving your CSA bounty.

Tamara Mannely, M.Ed., HHC, certified healing foods specialist and holistic health coach
 \$37 nonmember; members receive 20% discount
 Thursday, April 17, 10 – 11:30 a.m.
 Plant Science Lab, Regenstein Center

New! Holistic Health and Wellness: A Healthier You

Are you busy with your family, your career, and your life? Do you tend to neglect your health? Do you think it is normal to gain weight, have a sore back, lack energy, etc.? Well, it doesn't have to be that way! You can get your body back in balance and start to feel great! Learn some easy techniques to nourish and balance your body to a healthier and happier you. You will leave this positive and uplifting class feeling empowered and ready to take back your health and restore balance and vitality to your life!

Tamara Mannely, M.Ed., HHC, certified healing foods specialist and holistic health coach
 \$19 nonmember; members receive 20% discount
 Thursday, May 1, 10:30 – 11:30 a.m.
 Design Studio

New! Sugar Busters

Do you crave sweets? You're not alone! The average American consumes 30 teaspoons of the sweet stuff every day without even realizing it! Sugar can pack on the pounds, zap your energy, run down your immune system, make you moody, and more. Wouldn't you love to kick the sugar habit once and for all? Join us for the Sugar Busters workshop and change your life for the better! Tamara Mannely will show you simple steps and proven strategies to help you understand why you crave sugar (hint: it's not your fault!) and how you can break sugar's hold on you. This is a positive and uplifting class where all are welcome.

Tamara Mannely, M.Ed., HHC, certified healing foods specialist and holistic health coach
 \$19 nonmember; members receive 20% discount
 Wednesday, June 4, 10:30 – 11:30 a.m.
 Annex 2

New! Fizzy Drinks: Healthy, Probiotic-rich Alternatives to Soda

Are you looking for healthy ways to quit the soda habit? In this class, Tamara Mannely will demonstrate several different recipes for making healthy, probiotic-rich, fizzy drinks that your whole family will enjoy! She will have plenty for you to taste and will show you how easy it is to make these in your own home! You will be able to take home notes, recipes, and a kombucha SCOBY (to make your own kombucha tea...one of the recipes she will demo).

Tamara Mannely, M.Ed., HHC, certified healing foods specialist and holistic health coach
 \$49 nonmember; members receive 20% discount
 Tuesday, June 10, 10 a.m. – noon
 Plant Science Lab, Regenstein Center

Opening My Medicine Bag: Therapeutic Touch

From the instructor's Native American background comes the idea that all of us carry special medicine that can help another person in need. In this workshop, Marilyn Johnston-Svoboda will share one of the healing tools from her medicine bag. This technique is an energetic healing modality called Therapeutic Touch (TT). The natural compassion we have for those we love is the motivating force of TT. Part of the practice includes relaxation and guided imagery. By the end of this workshop, you will have learned the basic steps and principles of TT and be able to use it in a simple way to help yourself, your family, and your friends.

Marilyn Johnston-Svoboda, Ed.D., R.N., writer, and counselor
 \$37 nonmember; members receive 20% discount
 Saturday, May 10, 1 – 3 p.m.
 Linnaeus Room

Reiki for You

Reiki is a complementary healing practice that can be used for self-care as well as care of others. Reiki is helpful in promoting relaxation, managing stress, and enhancing one's overall health and well-being. Reiki works holistically to bring balance to the body, mind, and spirit. In this two-class series, you will learn about working with Reiki and how to offer Reiki to yourself every day. Completion of both classes is required to receive your Level I certificate.

Ellani Maurides and Mary Lynn Carver, Instructors, The Reiki Share Project
 \$187 nonmember; members receive 20% discount
 2 Thursdays, June 19 & 26, 1 – 5 p.m.
 Linnaeus Room

FITNESS WALKS

Maximize the benefits of walking for exercise by learning about proper posture, muscle strengthening, and stretching. The Chicago Botanic Garden's outdoor environment is a unique alternative to a health club, offering fresh air and a place where beautiful scenery changes weekly. All fitness levels are accommodated. Dress for the weather; wear comfortable clothing and walking shoes. The incremental multi-session pass allows the walker to choose which sessions to attend during the season.

Esther Gutiérrez-Sloan, certified personal trainer and president, SALSArotics, Inc.

# of Sessions	Nonmember Fee (members receive 20% discount)
4 Sessions	\$63 nonmember
8 Sessions	\$119 nonmember
12 Sessions	\$166 nonmember
Drop-in Rate	\$15

Saturdays, April 12 – November 15, 8 – 9 a.m.
 Meet in Visitor Center

Meditation Walk: The Cycles of Life

What better way to enjoy the seasonal weather and nourish your spirit at the same time than an early morning meditation walk at the Chicago Botanic Garden! Come prepared to relax and renew as we slowly walk around the Great Basin, making four stops for guided meditation. The four life-cycle images we will focus on are creation/birth, growth, pain and loss, and new life. Each image will be linked to our own life experiences, and you will have private time to contemplate, journal, wander, and breathe. This event will take place rain or shine as we can utilize covered spaces if needed.

Mary Ann Spina, teacher, writer, and counselor
 \$25 nonmember; members receive 20% discount
 Saturday, May 3, 8 – 10 a.m.
 Meet at Visitor Center



TAI CHI CLASSES

Tai chi's fluid movements make the Chicago Botanic Garden an ideal location for classes. People of all ages and physical conditions can learn these movements. Tai chi is best practiced in loose clothing and stocking feet or comfortable flat shoes. On occasion, when weather permits, class will occur outdoors in one of the beautiful areas of the Chicago Botanic Garden. One-time class trial fee: \$20.

Tai Chi 101

This course will introduce students to Sun-style and Yang-style tai chi chuan. We will focus on basic principles to improve your balance and relaxation, and also increase your range of motion and reduce stress. This class of gentle movements is recommended for beginners and provides you with a solid foundation for choosing future studies. No previous tai chi experience is required, and all are welcome.

Gordon Lock, instructor
\$165 nonmember; members receive 20% discount
10 Wednesdays, March 12 – May 21, 8 – 9 a.m.
(no class April 23)
Burnstein Hall

Tai Chi: Traditional Yang-Style Long Form

This course continues with in-depth study of the Yang style. Some qigong exercises, such as the Eight Pieces of Brocade, will also be practiced. In session we will emphasize the ABCs—alignment, breathing, and concentration. Tai Chi 101 or some tai chi experience is recommended.

Gordon Lock, instructor
\$165 nonmember; members receive 20% discount
10 Wednesdays, March 12 – May 21,
9:15 – 10:15 a.m.
(no class April 23)
Burnstein Hall

Tai Chi: Traditional Sun-Style Long Form

This course continues with in-depth study of the Sun style. Some qigong exercises, such as the Eight Pieces of Brocade, will also be practiced. In session we will emphasize the ABCs—alignment, breathing, and concentration. Tai Chi 101 or some tai chi experience recommended.

Gordon Lock, instructor
\$165 nonmember; members receive 20% discount
10 Thursdays, March 13 – May 22, 8 – 9 a.m.
(no class April 24)
Burnstein Hall

Simplified Yang-Style Tai Chi Chuan

We will practice all 24 postures of tai chi chuan and the technique for each movement will be discussed. The routine may be completed in less than ten minutes. Members will build a solid foundation for balance and coordination. Qigong exercises will also be introduced to improve overall fitness.

Gordon Lock, instructor
\$165 nonmember; members receive 20% discount
10 Thursdays, March 13 – May 22, 9:15 – 10:15 a.m.
(no class April 24)
Burnstein Hall

New! Tai Chi For Beginners: Sun-Style

This course will introduce students to Sun-style tai chi chuan with a few Yang-style concepts as well. Sun-style is the most modern form of tai chi and the movements are very gentle in nature. We will focus on basic principles to improve your balance and relaxation, and also increase your range of motion and reduce stress. This class of gentle movements is recommended for beginners and provides you with a solid foundation for choosing future studies. No previous tai chi experience is required, and all are welcome.

Gordon Lock, instructor
\$119 nonmember; members receive 20% discount
7 Tuesdays, June 3 – July 22, 8 – 9 a.m.
(no class July 8)
Burnstein Hall

New! Tai Chi For Beginners: Yang-Style

This course will introduce students to Yang-style tai chi chuan with a few Sun-style concepts as well. Tai chi from the Yang family is a beautiful, slow-moving meditation in motion. We will focus on basic principles to improve your balance and relaxation, and also increase your range of motion and reduce stress. This class of gentle movements is recommended for beginners and provides you with a solid foundation for choosing future studies. No previous tai chi experience is required, and all are welcome.

Gordon Lock, instructor
\$119 nonmember; members receive 20% discount
7 Tuesdays, June 3 – July 22, 9:15 – 10:15 a.m.
(no class July 8)
Burnstein Hall

New! Tai Chi: Intermediate Sun-Style

Further your study of the Sun-style form of tai chi. Consistent practice of tai chi helps us to relax from the fast pace of multitasking and recognize the moment at hand. The movements help to reconnect us to mind-body awareness and restore harmony and balance into our daily routines. Prerequisite: Tai Chi for Beginners or some tai chi experience.

Gordon Lock, instructor
\$165 nonmember; members receive 20% discount
10 Wednesdays, June 4 – August 13, 8 – 9 a.m.
(no class July 9)
Burnstein Hall

New! Tai Chi: Advanced Yang-Style

This course continues with in-depth study of the Yang-style for students who have completed the intermediate class level and feel comfortable advancing. Some qigong exercises, such as the Eight Pieces of Brocade, will also be practiced. In session we will emphasize the ABCs—alignment, breathing, and concentration.

Gordon Lock, instructor
\$165 nonmember; members receive 20% discount
10 Wednesdays, June 4 – August 13,
9:15 – 10:15 a.m.
(no class July 9)
Burnstein Hall

New! Tai Chi: Advanced Sun-Style

This course continues with in-depth study of the Sun-style for students who have completed the intermediate class level and feel comfortable advancing. Some qigong exercises, such as the Eight Pieces of Brocade, will also be practiced. In session we will emphasize the ABCs—alignment, breathing, and concentration.

Gordon Lock, instructor
\$165 nonmember; members receive 20% discount
10 Thursdays, June 5 – August 14, 8 – 9 a.m.
(no class July 9)
Burnstein Hall

New! Tai Chi: Intermediate Yang-Style

Further your study of the Yang-style form of tai chi. Consistent practice of tai chi helps us to relax from the fast pace of multitasking and recognize the moment at hand. The movements help to reconnect us to mind-body awareness and restore harmony and balance into our daily routines. Tai Chi for Beginners or some tai chi experience is recommended.

Gordon Lock, instructor
\$165 nonmember; members receive 20% discount
10 Thursdays, June 5 – August 14, 9:15 – 10:15 a.m.
(no class July 9)
Burnstein Hall

Visit www.chicagobotanic.org/school/faculty for faculty biographies.

Chicago Botanic Garden members receive a 20 percent discount on classes.

YOGA CLASSES

Yoga is an ancient practice that unites body, mind, and spirit. For all sessions, wear comfortable clothing (sweats, shorts, or yoga pants) with socks or bare feet. Yoga mats are required. It is also suggested that you bring a towel with you, as well as a sweatshirt for cool-down. All yoga classes last approximately 60 minutes. On occasion, when weather permits, class will occur outdoors in one of the beautiful areas of the Chicago Botanic Garden. One-time class trial fee: \$20.

Gentle Yoga and Meditation

All levels of fitness and experience are welcome in this class, which will include meditative movement and contemplative stillness. We will focus on the breath and relieving stress.

Steve Nakon, Whole Journey
\$170 nonmember; members receive 20% discount
10 Wednesdays, April 16 – June 18, 9:30 – 10:30 a.m.
Linnaeus Room

Yoga Master Class

This class is designed for the student who is looking for a deeper understanding of the principles of movement and alignment. Join us for engaging practices in a welcoming, accepting, and encouraging environment. Be ready to explore your whole body through carefully designed sequences, gaining understanding of movement in more depth and detail. Don't miss the opportunity to emerge from this experience with a new knowledge set, a deeper understanding of your practice, and a stronger relationship with your essential self. Class size is limited so sign up soon.

Steve Nakon, Whole Journey
\$125 nonmember; members receive 20% discount
5 Fridays, May 23 – June 20, 9 – 10:30 a.m.
Linnaeus Room

Gentle Yoga

A series of yoga poses and breathing exercises designed and adapted for a tranquil, relaxing yoga experience. In this course, we will take a gentle, restorative approach to the practice. All students are welcome. Come and enjoy a sense of peace and balance.

Steve Nakon and Patricia Nakon, Whole Journey
Spring session:
\$170 nonmember; members receive 20% discount
10 Mondays, April 14 – June 16, 9 – 10 a.m.
or 5:15 – 6:15 p.m.
Linnaeus Room
or
Summer session:
\$150 nonmember; members receive 20% discount
8 Mondays, July 7 – August 28, 9 – 10 a.m.
or 5:15 – 6:15 p.m.
Linnaeus Room

Introductory Yoga

This is a course for the newer student focusing on yoga movement and breathing basics. We will investigate how the principles of yoga help support health and well-being. All are welcome. Join us as we explore the yoga basics.

Steve Nakon, Whole Journey
Spring session:
\$170 nonmember; members receive 20% discount
10 Wednesdays, April 16 – June 18, 5:15 – 6:15 p.m.
or 7 – 8 p.m.
Linnaeus Room
or
Summer session:
\$150 nonmember; members receive 20% discount
8 Wednesdays, July 9 – August 30, 5:15 – 6:15 p.m.
or 7 – 8 p.m.
Linnaeus Room

Yoga Flow Beginner

The Yoga Flow series combines movement linked to the breath, working the body and engaging the mind. This is a moderately challenging course for students with some yoga experience.

Steve Nakon, Whole Journey
Spring session:
\$170 nonmember; members receive 20% discount
10 Tuesdays, April 15 – June 17, 9:15 – 10:15 a.m.
or 6 – 7 p.m.
Linnaeus Room
or
Summer session:
\$150 nonmember; members receive 20% discount
8 Tuesdays, July 8 – August 29, 9:15 – 10:15 a.m.
or 6 – 7 p.m.
Linnaeus Room

Yoga Flow Intermediate

The Yoga Flow series combines movement linked to the breath, working the body and engaging the mind. This is a more exhilarating, challenging Flow series for students who have taken Beginner Flow or have comparable experience.

Steve Nakon, Whole Journey
Spring session:
\$170 nonmember; members receive 20% discount
10 Tuesdays, April 15 – June 17, 8 – 9 a.m.
or
10 Thursdays, April 17 – June 19, 9 – 10 a.m.
or 6 – 7 p.m.
Linnaeus Room
or
Summer session:
\$150 nonmember; members receive 20% discount
8 Tuesdays, July 8 – August 29, 8 – 9 a.m.
or
8 Thursdays, July 10 – August 31, 9 – 10 a.m.
or 6 – 7 p.m.
Linnaeus Room

Wellness programming is generously supported by NorthShore University HealthSystem.

Yoga practice in a welcoming environment releases stress.





Youth and Family Programs

Early positive experiences in nature or other plant-rich environments can foster a lifelong appreciation of the natural world. That is why, with the support of the Guild of the Chicago Botanic Garden, we are deeply committed to engaging families and children of all ages with a year-round schedule of professionally designed, age-appropriate programs held throughout the Garden.

The Perfect Camping Trip!

Roast marshmallows over a roaring campfire. Hike some of the Midwest's best nature trails. Revel in gorgeous scenery. Drift off to sleep in your very own garden bed. Chicago Botanic Garden family campouts deliver all the fun, with none of the hassles of camping (hello, convenient electricity and indoor plumbing!). Activities are geared to children ages six and up. What happens if it rains? If inclement weather is forecasted, we'll reschedule for our backup date. Unexpected showers? A covered shelter is available to keep you dry.

Our 2014 schedule includes three springtime group campouts, one end-of-July campout specifically geared to families with younger or several children, and three September group campouts. Group campout admission is \$45 per child and \$15 per adult. Our July campout is \$50 per child and \$20 per adult. Garden Plus members receive a 20 percent discount. Please visit chicagobotanic.org/afterschool/campouts#family or see page 70 for schedule and call (847) 835-8239 to register.

Bring your tents, camping gear, flashlights, and a picnic dinner. We'll provide s'mores fixings, breakfast, and nature!



Family Program

Free Programs

Discovery Backpacks

Enliven your family's Garden visit using tools to identify and observe plants and animals. Check out one of our free Backpacks, available on a first-come, first-served basis at the Information Desk in the Visitor Center.

Visit chicagobotanic.org/forfamilies for more information.

Story Time

Stop by the Lenhardt Library on Monday mornings for nature-themed stories and hands-on activities. Geared toward children ages 2 to 5 with a caregiver. No program April 14.

Mondays, through May 19
10 – 11 a.m.

Visit chicagobotanic.org/forfamilies for more information.

ScreenBreak Family Drop-in Activities

Stop by for nature-themed stories and activities in the Lenhardt Library! Geared toward children ages 2 to 5 with a caregiver. No registration required. Parking is free from March 2 to 8 for those families with a ScreenBreak button, wristband, or card. Offered in collaboration with the Alliance for Early Childhood's ScreenBreak.

For information about ScreenBreak activities at other locations, visit winnetkaalliance.org.

Wednesday, March 5 & Friday, March 7
10 – 11 a.m.

Malott Japanese Garden Spring Weekend

Celebrate spring by writing a seasonal haiku and making a cherry blossom hanging scroll, or trying other hands-on activities. Enjoy suminagashi painting, storytelling, and musical performances, and take a walk in the Malott Japanese Garden.

Saturday, March 22 & Sunday, March 23
11 a.m. – 4 p.m.

Visit chicagobotanic.org/forfamilies for more information.

Malott Japanese Garden Children's Festival

Learn about children's celebrations in Japan during this special weekend of activities. Listen to shakuhachi and koto harp music, enjoy traditional folktales, and watch a tea ceremony. Kids of all ages can make projects to celebrate Girls' Day and Boys' Day—design a kimono paper doll, create a miniature carp kite, construct an origami samurai helmet, and more, at family-friendly hands-on stations.

Saturday, May 17 & Sunday, May 18
10 a.m. – 2 p.m.

Visit chicagobotanic.org/forfamilies for more information.

Fee-based Programs

Weekend Family Classes

Together, adults and children ages 4 – 10 can explore cool things about how plants connect to science, art, history, and culture. Each Saturday program includes a variety of hands-on activities and projects, as well as opportunities to bring the Garden home.

9:30 – 11 a.m. or 1 – 2:30 p.m.

\$22 nonmember per child

Garden Plus members receive a 20 percent discount

Visit chicagobotanic.org/familyprograms or call (847) 835-6801 for more information.

Homemade Ice Cream

Saturday, March 1

Get an up-close look at one of the world's tiniest seeds from the vanilla orchid, make a batch of ice cream, and pot up a plant that can flavor ice cream.

NEW! Tropical Terrarium

Sunday, March 16

Gardens come in all shapes and sizes. Visit the Chicago Botanic Garden's three Greenhouses, learn about what a plant needs to grow and thrive, and then make your own tropical terrarium to bring home.

Gumballs & Superballs

Saturday, March 29 & Sunday, April 6

Find out how people use parts of rainforest trees to make chewing gum and rubber. Create your own bouncing ball and flavorful gum to take home.

Nature Nights

Bring a picnic dinner and spend an evening at the Garden! Children ages 4 – 10 and their families will explore different areas of the Garden and enjoy a variety of discovery-based activities. Each Nature Nights also includes a tram ride, a planting project, and s'mores around the campfire.

***Don't forget to bring a picnic dinner!**
Dessert is provided.

5 – 7:30 p.m.

\$25 nonmember per child

Garden Plus members receive a 20 percent discount

Visit chicagobotanic.org/naturenights or call (847) 835-6801 for more information.

Ready, Set, Garden!

June 7 or 21

Discover what plants need to grow and learn some gardening basics as you plan, plant, mulch, and water in the Grunsfeld Children's Growing Garden. Then, pot up a plant to grow in your own garden at home.

NEW! Seed Safari

July 5 or 19

From packing for your trip to identifying the mystery plant, you and your family will experience what it is like to be a plant hunter during this expedition around the Chicago Botanic Garden. At the end of the night, pot up the mystery plant for your botanical collection at home and share stories of your adventures while eating s'mores around the campfire.

NEW! Leaping Lepidoptera!

August 2 or 16

Butterflies and moths may look very similar, but there are several differences. Learn how to tell a moth from a butterfly, visit The Hidden Beauty of Moths exhibition, and look for moths and butterflies at the Garden. Then create a Lepidoptera haven to invite butterflies and moths to your yard.

Harvest Hike

September 6 or 20

Experience the beauty of the Grunsfeld Children's Growing Garden in the fall and see what fruit and vegetables abound at the end of the season. You and your child will explore the garden to find unique plants used for food, discuss composting plant material, and even plant and harvest some veggies to take home.

The Malott Japanese Garden Spring Weekend and Children's Festival celebrate the culture of Japan. Here, a participant practices chopsticks skills with plastic sushi.



Birthday Parties

Celebrate your child's birthday with a garden-themed party! Choose from a variety of themes. All parties include educational, hands-on activities led by Garden staff. Every child takes home a plant plus additional items they've created. Parties can be scheduled year-round on Saturday or Sunday mornings or afternoons for children turning 4 and up. Garden Plus membership required.

Visit chicagobotanic.org/birthdays or call (847) 835-8275 for more information.

Youth Programs

Scouts

Scout Badge Programs

Scouts will complete badge requirements with challenging activities. Our wide range of scout programs takes children throughout the Garden, and can be scheduled after school on Mondays through Fridays and on Saturdays between 9 a.m. and 3 p.m.

90-minute programs (ages 6 – 8):

Deposit of \$120 covers 10 Scouts; plus \$10 per additional Scout, due on the day of the program.

2-hour programs (ages 9 – 12):

Deposit of \$170 covers 10 Scouts; plus \$15 per additional Scout, due on the day of the program.

Visit chicagobotanic.org/scout or call (847) 835-8239 for more information about these programs.

Scout Seasonal Workshop: Earth Day Celebration

Celebrate Earth Day with hands-on activities! Scouts will discover signs of spring around the Garden on a scavenger hunt, give back to the earth with a project to help improve the Garden, and save resources by reusing items to make art inspired by the beautiful gardens.

Adults should plan to stay with their Scouts for the duration of the program. If you are a leader registering a group, at least one adult chaperone for every five Scouts is required.

Saturday, April 19

12:45 – 3 p.m.

\$14 per child

Visit chicagobotanic.org/scout/seasonal or call (847) 835-8239 for more information.

Campers enjoy musical instruction with a Ravinia artist.

Campouts

Groups can come pitch a tent in our Outdoor Classroom for a low-stress camping experience with flushing toilets and running water! We'll play nature games, go for an evening hike through the prairie, and cook s'mores. Please plan to spend the night, as the Garden is unable to accommodate "under-night" or evening-only participants. Activities are geared for participants ages 6 and up. Please note the rain dates when registering for campouts. Campout fees will only be refunded if both the original date and the rain date are canceled by the Youth Coordinator.

Group Campouts

For scout or other youth groups of 10 or more:

May 17 (rain date May 23)

May 31 (rain date June 6)

June 14 (rain date June 20)

\$45 per child

\$15 per adult

5 p.m. Saturday – 8:30 a.m. Sunday

Visit chicagobotanic.org/afterschool/campouts or call (847) 835-8239 for more information.

Spring Break Camp

Children in grades K – 2 and 3 – 5 participate in high-quality learning activities with experienced teachers who use inquiry-based, hands-on activities. This spring, children will dissect and plant seeds, explore fragrant herbs and flowers, search for birds and early spring plants on nature hikes, take a trolley ride around the Garden, create take-home science-themed projects, and much more!

March 31 – April 4

9:30 a.m. – 3 p.m.

\$72 nonmember per child per day

Garden Plus members receive a 20 percent discount

Visit chicagobotanic.org/springbreakcamp to register or call (847) 835-6801 for more information.





Camp CBG

Camp CBG provides exciting and enriching summer learning experiences for your child, with programs for children ages 6 months to 12. All camps include nature exploration, inquiry-based activities, games, hands-on projects, and planting. The Garden offers weeklong morning, afternoon, and all-day camps from June through August.

Visit chicagobotanic.org/camp for complete class descriptions, fees, and schedule with dates and times.

Online registration is available at chicagobotanic.org/camp.

New! Plant & Play Lekotek

Ages 3 to 8 plus siblings; parents welcome

\$250 per nonmember family; Garden Plus and National Lekotek members receive 20 percent discount

August 11 – 15, 9:30 a.m. – noon, or 12:30 – 3 p.m.

Children with special needs or disabilities are invited to discover the sights, smells, and fun at the Garden. Lekotek is offering an all-inclusive, nature-inspired Plant 'n' Play day camp designed for children ages 3 to 8 years old and siblings. Parents and a sibling are welcome to join in our camp activities that foster social interactions, motor skills, and outdoor education. Plant the seeds that will grow in your backyard and in your child's development! Parents/caregivers are welcome to stay and participate, or drop-off is available during the camp week.

Visit chicagobotanic.org/camp/plantplay or call (847) 835-8361 to register.



My First Camp Bloomin' Garden Strollers

Ages 6 months – 2 years

**\$25 nonmember per child per week
9:45 – 11:15 a.m. Friday**

Caregivers are invited to join our social play program. You'll enjoy a brisk walk through the Garden, talk with a Garden expert, get behind-the-scenes information, and finish your morning with activities designed for our smallest visitors. Every week we will explore a new Garden theme. Camp meets in the Visitor Center.

My First Camp Age 2

Age **2**

Born on or before September 1, 2012

**\$42 nonmember per child per week
Garden Plus members receive a 20 percent discount**

My First Camp Age 2 Information

- Camp meets one Tuesday and Thursday from 9 to 10 a.m. or 10:30 to 11:30 a.m.
- An adult must accompany each registered child.
- To make camp enjoyable and fair to all, do not bring unregistered children, including siblings, to camp. Nursing mothers may call (847) 835-8361 to make arrangements.
- Camp meets in the Grunsfeld Children's Growing Garden, weather permitting. In the event of rain, camp will take place in the Learning Center.
- Dress for the weather.
- Pack a water bottle and peanut-free snack daily.

Art & Music

**July 8 & 10 or
August 5 & 7**

Share the joy of creating garden-inspired art with your child. Have fun practicing fine and gross motor skills while developing your child's appreciation of nature and the arts.

Fantastic Foods

**June 25 & 26 or
July 29 & 31**

Is your tot interested in helping out in the kitchen, setting the kitchen table, or eating new foods? Discover new foods, prepare a tasty snack, and work on kneading, mixing, grating, and spreading skills.

My First Garden

**July 15 & 17 or
August 12 & 14**

Your little gardener will dig, sow, and harvest with our child-sized tools! Grow those gardening skills by digging in the dirt and helping us create a garden!

Small Scientists

**June 17 & 19 or
July 22 & 24**

You and your child will explore the world using magnets, water, sand, and the colors of the Garden. Discover textures and smells in nature, practice observation skills, and use scientific tools.

My First Camp Age 3

Born on or before September 1, 2011

Age **3**

\$64 nonmember per child per week
Garden Plus members receive a 20 percent discount

My First Camp Age 3 Information

Camp meets one Monday, Wednesday, and Friday from 9 to 10 a.m. or 10:30 to 11:30 a.m.

- An adult must accompany each registered child.
- To make camp enjoyable and fair to all, do not bring unregistered children, including siblings, to camp. Nursing mothers may call (847) 835-8361 to make arrangements.
- Camp meets in the Grunfeld Children's Growing Garden, weather permitting. In the event of rain, camp will take place in the Learning Center.
- Dress for the weather.
- Pack a water bottle and peanut-free snack daily.

Art & Music

July 7, 9, 11 or
August 4, 6, 8

Preschoolers' creativity will thrive with nature-inspired art and music activities. Engage in clay work, movement, music, and interactive storytelling with your little one at the Garden.

Fantastic Foods

June 23, 25, 27 or
July 28, 30, August 1

You and your preschooler will discover the different foods that come from plants. Plant an herb garden, practice slicing, pouring, and chopstick skills, and make a fruit salad!

My First Garden

July 14, 16, 18 or
August 11, 13, 15

Your preschooler will create a garden and care for plants, from planting to watering to harvesting. Taste the bounty of the Garden and sell produce at our Farmers' Market!

Small Scientists

June 16, 18, 20 or
July 21, 23, 25

Preschoolers will be introduced to the parts of a flower; learn about ants and their body parts; and explore wind, water, and worms through developmentally appropriate activities.

Green Sprouts

Most children are 4 or 5

Grades **Jk-K**

\$210 nonmember per child per camp
Garden Plus members receive a 20 percent discount

Green Sprouts Information

Camps meet Monday through Friday from 9:30 a.m. to noon or 12:30 to 3 p.m.

- Dress for the weather.
- Pack a water bottle and peanut-free snack daily.

Bug Brigade

July 7 – 11, 9:30 a.m. – noon or
July 28 – August 1, 12:30 – 3 p.m.

Is your child fascinated by bugs? Children will get up-close and personal with butterflies and bees, learn how their favorite insects see, and make a bug sucker to collect and study insects.

Fun with Physics

June 16 – 20, 9:30 a.m. – noon SOLD OUT
July 28 – August 1, 9:30 a.m. – noon

Green Sprouts will perform basic physical science experiments and discover the laws that rule the natural world. They'll explore why items sink or float, how magnets work, and learn about static electricity.

Garden Expedition

July 14 – 18, 9:30 a.m. – noon or
August 4 – 8, 12:30 – 3 p.m.

Young ecologists will investigate trees, leaves, prairie plants, and aquatic creatures, discovering all that the natural world of Illinois has to offer. They'll learn how to preserve these wonders for future generations.

Habitat Hunters

June 23 – 27, 12:30 – 3 p.m. or
July 21 – 25, 9:30 a.m. – noon or
August 4 – 8, 9:30 a.m. – noon

Habitat Hunters will explore the different habitats the Garden has to offer, learn how to track animals, and make a habitat for one of the creatures that live here.

Hidden Treasures

June 16 – 20, 12:30 – 3 p.m. or
July 7 – 11, 9:30 a.m. – noon or
August 4 – 8, 9:30 a.m. – noon

Campers will use a map to find their way, create a treasure chest, and dig up a treasure to keep. They'll also bring home a plant with a hidden treasure to share.

Mad Scientists

June 23 – 27, 9:30 a.m. – noon or
July 21 – 25, 12:30 – 3 p.m. or
August 11 – 15, 9:30 a.m. – noon

For young explorers who have ever wondered how fireflies glow, why leaves change, whether fish sleep, or just WHY? They'll find these answers and many more as they become not-so-mad scientists.

Nature Art

June 23 – 27, 9:30 a.m. – noon SOLD OUT
July 14 – 18, 9:30 a.m. – noon or
August 11 – 15, 12:30 – 3 p.m.

Explore all the ways to make art from nature! Green Sprouts will use the sun's power to make prints and dyes, use clay for sculpture, and become inspired by flowers with watercolor painting.

Salad Science

June 16 – 20, 9:30 a.m. – noon or
July 21 – 25, 12:30 – 3 p.m.

We eat parts of plants every day. Young food scientists will explore the Garden to discover how foods grow. We'll discover how plants change the sun's energy into energy for our bodies, prepare our own snacks, and plant a salad to take home!

Sprouting Wizards

July 7 – 11, 12:30 – 3 p.m. or
August 11 – 15, 9:30 a.m. – noon

Kids become science wizards as they explore basic chemistry and the properties of solids, liquids, and gases through experimentation. No need to bring magic wands...we'll make our own!

Super Seedlings

July 14 – 18, 12:30 – 3 p.m. or
July 28 – August 1, 9:30 a.m. – noon

Campers will dig, plant, water, weed, and sow in the Garden. Working together, they'll create a garden, practice seed dissection, and become true gardeners!



Green Thumbs

Most children are 6 or 7

Grades **1-2**

\$210 nonmember per child per camp
Garden Plus members receive a 20 percent discount

Green Thumbs Information:

Camps meet Monday through Friday from 9:30 a.m. to noon or 12:30 to 3 p.m.

- Dress for the weather.
- Pack a water bottle and peanut-free snack daily.

Art in the Garden

June 23 – 27, 9:30 a.m. – noon **SOLD OUT**
 July 14 – 18, 12:30 – 3 p.m. or
 August 11 – 15, 9:30 a.m. – noon

Green Thumbs discover different natural artistic styles while they explore the Garden. They'll sculpt with clay, make plant dyes, and create their own paper.

Incredible Edibles

June 16 – 20, 12:30 – 3 p.m. or
 July 28 – August 1, 9:30 a.m. – noon

Young chefs will explore the Garden with their taste buds and find out how plants turn the sun's energy into fuel for our bodies! We'll explore how we eat plant parts every day, harvest food grown in the Outdoor Classroom, make our own tasty snacks, and plant an herb garden to take home.

Kinetic Kids

July 7 – 11, 9:30 a.m. – noon or
 July 21 – 25, 9:30 a.m. – noon

Budding physicists will discover cool science tricks, explore the laws of motion, and perform physical science experiments with toys.

Treasure Hunt

June 16 – 20, 9:30 a.m. – noon or
 July 14 – 18, 9:30 a.m. – noon or
 August 4 – 8, 12:30 – 3 p.m.

Campers will develop map-reading skills, use compasses, and discover how archeologists excavate sites. They will create a hidden treasure map and find secret plant treasures, too.

Expert Wizardry

July 7 – 11, 9:30 a.m. – noon or
 August 11 – 15, 12:30 – 3 p.m.

Young wizards will discover the magic of science as they create strange potions and perform unbelievable experiments while learning basic chemistry. No book of spells necessary—we'll make our own.

Explore Your World

July 14 – 18, 9:30 a.m. – noon
 August 4 – 8, 9:30 a.m. – noon

Curious campers will learn about the natural world through guided exploration and discovery by visiting the many habitats at the Garden. They'll also learn how to help preserve these habitats.

Plant People

June 16 – 20, 9:30 a.m. – noon or
 July 28 – August 1, 12:30 – 3 p.m.

Young horticulturists will explore the fascinating life cycle of plants with plenty of opportunity for scientific discovery, hands-on experiments, and garden cultivation.

Grossology

June 23 – 27, 12:30 – 3 p.m. or
 July 21 – 25, 9:30 a.m. – noon or
 August 4 – 8, 9:30 a.m. – noon

Campers will uncover the science behind "gross" things around and inside them as they explore slimy and smelly natural phenomena. They'll use their observation skills along with scientific tools.

Wildlife Wanderers

June 23 – 27, 9:30 a.m. – noon or
 July 21 – 25, 12:30 – 3 p.m. or
 August 11 – 15, 9:30 a.m. – noon

Junior ecologists will study creatures on the ground, in the air, and in the water. Create a science kit, plant a terrarium, identify trees and animal tracks, and record everything in your journal.

Insect Investigation

July 7 – 11, 12:30 – 3 p.m. or
 July 28 – August 1, 9:30 a.m. – noon

Bug lovers, unite! Green Thumbs will search for insect homes, make insect display cases, and create insect-vision glasses to take home.

Explorers

Most children are 8 or 9

Grades **3-4**

\$210 nonmember per child per camp
Garden Plus members receive a 20 percent discount

Explorers Information

Camps meet Monday through Friday from 9:30 a.m. to noon or 12:30 to 3 p.m.

- Dress for the weather.
- Pack a water bottle and peanut-free snack daily.

Young horticulturists explore soil and plants at Camp CBG.

Al Fresco Art

July 7 – 11, 9:30 a.m. – noon or
 July 28 – August 1, 9:30 a.m. – noon

Campers will be artistically inspired by the Garden and try their hand at botanical illustration, sculpture, printmaking, and painting. We'll explore new techniques each day of this outdoor art program.

Botany in the Kitchen

June 23 – 27, 9:30 a.m. – noon or
 July 21 – 25, 12:30 – 3 p.m.

Young chefs will discover how fruits, vegetables, herbs, and nutrients make cooking fascinating. They'll harvest vegetables and plant an herb garden.

Camera Craft

July 7 – 11, 12:30 – 3 p.m. or
 August 4 – 8, 9:30 a.m. – noon

Campers will learn the elements of composition and framing snapshots, and practice shooting photos around the Garden. They'll create a pinhole camera and rediscover the magic of nineteenth-century photography. Each camper must bring two disposable film cameras on the first day of camp.

Dirty Jobs

June 23 – 27, 12:30 – 3 p.m. or
 July 21 – 25, 9:30 a.m. – noon

Have you ever wondered how dirty, grimy, and grubby you can get working in a garden? Campers see what is in a day's work at the Garden. Keep our worm bins healthy, learn about the importance of compost, design and plant a garden, and meet a Garden scientist!

Forensic Investigators

June 16 – 20, 9:30 a.m. – noon or
 July 28 – August 1, 12:30 – 3 p.m.

This year's all-new mystery will require young CSI team members to try investigative techniques used by the pros to help us get to the bottom of this summer's hot case.

Garden Caching

July 14 – 18, 9:30 a.m. – noon **SOLD OUT**
 August 4 – 8, 12:30 – 3 p.m.

A new Garden adventure awaits! Explorers will search for hidden caches using compasses, maps, and GPS as they learn the etiquette of geocaching. They'll also create a cache for others to find.

Konnichiwa Japan

June 16 – 20, 12:30 – 3 p.m. or
 August 11 – 15, 12:30 – 3 p.m.

Time for immersion in Japanese culture as we explore Sansho-En, learn the art of bonsai, create sushi-inspired snacks, discover the art of calligraphy, and visit the Shoin House.

Surviving Outdoors

July 14 – 18, 12:30 – 3 p.m. or
 August 11 – 15, 9:30 a.m. – noon

Explorers will discover the secrets pioneers used to find water, make a collection of safe and useful plants, create a shelter, and learn about how to predict weather and storms.



Adventurers

Most children are 10 to 12

Grades **5-7**

\$430 nonmember per child per camp
Garden Plus members receive a 20 percent discount

Adventurers Information

Camps meet Monday through Friday from 9:30 a.m. to 3 p.m.

- Dress for the weather.
- Pack a water bottle and peanut-free snack daily.
- Campers must bring a peanut-free lunch that does not require refrigeration.

Art

June 16 – 20, 9:30 a.m. – 3 p.m.
July 21 – 25, 9:30 a.m. – 3 p.m.

Artists will introduce Adventurers to the use of various media to create their own art. Using the Garden as a backdrop, students will develop their photography, sculpture, and drawing skills. They'll explore the use of natural materials and learn various tricks of the trade used by professional artists.

Chemistry

June 23 – 27, 9:30 a.m. – 3 p.m.
July 28 – August 1, 9:30 a.m. – 3 p.m.

Who knew chemistry could be so cool? Adventurers will explore the basics of chemistry and chemical reactions. By performing simple experiments, they will develop a basic understanding of acids and bases, fine-tune measurement skills, and understand the importance of accurate data observation and recording.

Cuisine

July 14 – 18, 9:30 a.m. – 3 p.m. or
August 4 – 8, 9:30 a.m. – 3 p.m.

Calling all aspiring chefs! Campers will discuss menu techniques and preparation; learn principles of cooking with fruits and vegetables; improve basic chopping skills; and learn the importance of kitchen safety, setting a table, plating dishes, and creating a healthy meal. We'll use our harvest in simple summer recipes—ice cream, pasta, and more!

Ecology

July 7 – 11, 9:30 a.m. – 3 p.m. or
August 11 – 15, 9:30 a.m. – 3 p.m.

What does an ecologist do at the Garden? Adventurers will discover what scientists do as they explore the Garden's native Illinois habitats. Campers will conduct studies in our prairie, wetland, and woodland habitats, becoming familiar with native species. They will perform their own surveys, identifications, and field observations.



Two-week Camps

NEW Camp Group – Rovers

Grades **2-4**

Most children are 7 to 9

\$860 nonmember per child per camp
Garden Plus members receive a 20 percent discount

Rovers Information

Camps meet for two weeks from Monday through Friday from 9:30 a.m. to 3 p.m.

- Dress for the weather.
- Pack a water bottle and peanut-free snack daily.
- Campers must bring a peanut-free lunch that does not require refrigeration.

It is a whole new adventure at Camp CBG in our two-week, full-day camps for kids entering grades 2 to 4! Campers will explore all the Garden has to offer, make new friends, and jump into a fun-filled, outdoor, and educational camp program.

Create & Grow

July 7 – 18 or
August 4 – 15
9:30 a.m. – 3 p.m.

Does your child enjoy the arts? Campers will explore the Garden with art, music, cooking, yoga, and planting activities that encourage creative multimedia expression. Spend two weeks of your summer being inspired by the Garden.

Science Explorer

June 16 – 22 or
July 21 – August 1
9:30 a.m. – 3 p.m.

Explorers will investigate plant, animal, and human adaptations, while utilizing the scientific process. Ecology, botany, physics plus chemistry equals a whole lot of fun in this exciting two-week camp.



Don't forget a t-shirt for your child!

New for 2014, preordered shirts are 20 percent off.
Price is \$15 after May 1.

Visit chicagobotanic.org/camp/tshirt to order your shirt online.

Camp Registration and Cancellation Policies

Registration Deadline

Registration is open until camps fill or one week prior to the start date of camp. You will receive an automated reply immediately upon completion of your online registration.

Membership

Garden Plus and above members receive a 20 percent discount on all Camp CBG programs! Those holding individual Garden memberships will not receive this discount. Please call (847) 835-8215 if you would like to upgrade your membership in order to receive the discount. You will need to provide a member ID number at the time of camp registration. Please note that Garden membership is nontransferable.

Age Limits

Please note the age groupings for each camp group. Campers must be entering the listed grade in fall 2014. We regret that we cannot make any exceptions to this policy. Campers in the Green Sprouts group and above must be toilet trained.

Online Emergency Forms

Camp CBG does not require a medical examination to attend camp; however, we ask that you fill out our Online Emergency Form as soon as you complete your online registration. In order for your child to attend camp, we must have a completed health form on file by June 1, 2014. Visit chicagobotanic.org/camp to find the form.

Extra-Special Attention

Please let us know on your child's Online Emergency Form, if your child has physical, emotional, educational, or medical special needs. Advise us of any severe allergies or chronic illness. This includes information regarding food or airborne allergies. If your child will require special accommodations, please call (847) 835-8361 to discuss your situation prior to registering.

Pick-Up/Drop-Off

Camper drop-off and pick-up take place in our Learning Campus entry drive. You may park and walk your child to camp, or take advantage of our direct car drop-off/pick-up. Details will be communicated via e-mail to all registrants by June 1, 2014.

Morning drop-off is 9:15 to 9:30 a.m.

Morning pick-up is at noon.

Afternoon drop-off is 12:15 to 12:30 p.m.

Afternoon pick-up is at 3 p.m.

Camp groups will leave the drop-off area promptly at 9:30 a.m. for morning camps and 12:30 p.m. for afternoon camps. If a child misses the departure of his or her camp group, it is the responsibility of the caregiver who brings that child to check in, and then escort the camper to his/her camp location for that day.

Please Do Not Bring To Camp

The Garden is NOT responsible for any item lost or broken during camp. Please leave the following items at home: personal video game players, cellphones, and MP3 players/iPods.

Camper Code of Conduct

You will be asked to review the CBG Camper Code of Conduct upon completion of the Online Emergency Form:

- Campers will treat their fellow campers, instructors, and volunteers with respect.
- Campers will follow directions and stay with their group.

Please read and discuss these expectations with your child. In the event that a camper does not follow the Code of Conduct, or his or her behavior endangers other campers or interferes with an instructor's ability to provide programming, the coordinator of Camp Programs or camp instructor will inform the parent at pick-up or through a phone call. If a second incident occurs, parents may be asked to withdraw their child from camp. Refunds will not be given for behavior-related withdrawals.

Cancellation Policy

You may cancel your child's Camp CBG registration up to two weeks before the first day of that camp. We are not able to give refunds for cancellations with less than two weeks' notice. Transfers will be granted up to one week before the start of a camp. A ten percent administrative handling fee per child per camp will be assessed for all cancellations. To cancel, please call (847) 835-6801. If your child is unable to attend camp due to medical reasons, you may receive a refund (less a ten percent processing fee) at any time prior to the start of camp by providing a doctor's note. We are unable to refund for missed days of camp. Camp CBG registration fees are nontransferable. Camps canceled by the Garden because of low enrollment or Garden closure will be automatically fully refunded. The Garden reserves the right to cancel a camp due to low enrollment.

Before- and After-Care

We are happy to offer before- and after-camp care for your camper. The program will be supervised by Camp CBG staff. Activities will include games, art projects, and gardening. Pack an extra snack for your camper for after-care. Fees are per week, and cannot be prorated for partial use; no discount for Garden Plus members is available. Comprehensive guidelines, including late fees, are available on the Camp CBG webpage.

Grades preK to 7

June 17 – August 16

Morning Care: 7:30 – 9:30 a.m.;

\$50 per week per camper

Afternoon Care: 3 – 5:30 p.m.;

\$63 per week per camper

Lunch

Camp CBG offers a supervised lunch period for Green Sprouts, Green Thumbs, and Explorers campers for \$10 per child per week. Pack a peanut-free lunch for your child that does not require refrigeration, and we will supervise your child during lunch (noon to 12:30 p.m.) and escort your child to his or her afternoon camp.

Leader in Training

Our Leaders in Training (LITs), ages 13–15, will help prepare for camps, assist teachers during the day, and learn life skills in our two-week program. These skills will help LITs in future job searches and college preparation. For an application and further information regarding the LIT program, please contact the camp manager at (847) 835-8361.

Visit chicagobotanic.org/camp for complete program descriptions and information on availability.



Camp CBG Schedule

	Time	June 16-20	June 23-27	July 7-11	July 14-18	July 21-25	July 28-August 1	August 4-8	August 11-15
Age 6 mos to 2 yrs My First Camp	9:45 – 11:15 a.m.	Friday Bloomin' Strollers	Friday Bloomin' Strollers	Friday Bloomin' Strollers	Friday Bloomin' Strollers	Friday Bloomin' Strollers	Friday Bloomin' Strollers	Friday Bloomin' Strollers	Friday Bloomin' Strollers
Age 2 My First Camp	9 – 10 a.m. TTh 10:30 – 11:30 a.m. TTh	Small Scientists	Fantastic Foods	Art & Music	My First Garden	Small Scientists	Fantastic Foods	Art & Music	My First Garden
Age 3 My First Camp	9 – 10 a.m. MWF 10:30 – 11:30 a.m. MWF	Small Scientists	Fantastic Foods	Art & Music	My First Garden	Small Scientists	Fantastic Foods	Art & Music	My First Garden
Grades JK-K Green Sprouts	9:30 a.m. – noon	Salad Science	Mad Scientists	Bug Brigade	Nature Art	Habitat Hunters	Super Seedlings	Hidden Treasures	Sprouting Wizards
	9:30 a.m. – noon	Fun with Physics	Nature Art	Hidden Treasures	Garden Expedition	Salad Science	Fun with Physics	Habitat Hunters	Mad Scientists
	12:30 – 3 p.m.	Hidden Treasures	Habitat Hunters	Sprouting Wizards	Super Seedlings	Mad Scientists	Bug Brigade	Garden Expedition	Nature Art
Grades 1-2 Green Thumbs	9:30 a.m. – noon	Treasure Hunt	Wildlife Wanderers	Expert Wizardry	Treasure Hunt	Grossology	Insect Investigation	Explore Your World	Art in the Garden
	9:30 a.m. – noon	Plant People	Art in the Garden	Kinetic Kids	Explore Your World	Kinetic Kids	Incredible Edibles	Grossology	Wildlife Wanderers
	12:30 – 3 p.m.	Incredible Edibles	Grossology	Insect Investigation	Art in the Garden	Wildlife Wanderers	Plant People	Treasure Hunt	Expert Wizardry
Grades 2-4 Rovers	FULL-DAY TWO-WEEK 9:30 a.m. – 3 p.m.	Science Explorers		Create & Grow		Science Explorers		Create & Grow	
Grades 3-4 Explorers	9:30 a.m. – noon	Forensic Investigation	Botany in the Kitchen	Alfresco Art	Garden Caching	Dirty Jobs	Alfresco Art	Camera Craft	Surviving Outdoors
	12:30 – 3 p.m.	Konnichiwa Japan	Dirty Jobs	Camera Craft	Surviving Outdoors	Botany in the Kitchen	Forensic Investigation	Garden Caching	Konnichiwa Japan
Grades 5-7 Adventurers	9:30 a.m. – 3 p.m.	Art	Chemistry	Ecology	Cuisine	Art	Chemistry	Cuisine	Ecology



Teacher and Student Programs

Understanding the role of plants in an ecosystem is a fundamental part of every child's education. We make learning about plants an exciting and enjoyable experience. Through our field trips, teacher workshops, and student internships, educators and students will gain botanical knowledge and a deeper appreciation for the natural world. All programs support Common Core standards, Illinois state goals for learning, and Next Generation Science Standards.

Training Educators to Help the Littlest Learners

Babies and toddlers are innately curious about science and the world around them, and they are “naturals” at exploring, forming predictions about what will happen, and experimenting to find out. When we lead children through this process, we encourage their curiosity and prepare them for future educational endeavors.

Chicago Botanic Garden workshops for early childhood educators (preK teachers, occupational therapists, hospital employees, informal educators, parents, and more) provide important training in how to help the littlest learners explore nature purposefully and build strong science-processing and inquiry skills—experimenting with objects that float and sink, making bird feeders, investigating colors in nature, and more! Our next early intervention workshop will focus on experiencing nature in new ways both outside and indoors. The workshop will be offered August 6 from 8:30 a.m. to 4:30 p.m. Participation is \$85 and participants may earn 7 CPDUs and 6.5 Early Intervention Credits.

Visit chicagobotanic.org/ctl/teacherprograms or call (847) 835-6801 for more information, or to register.

Parents and educators: Chicago Botanic Garden early intervention workshops provide safe and fun nature experiences that foster inquiry, nurture science skills, and encourage compassion for nature.



Teacher Professional Development

We invite you to increase your understanding of plants and nature, build your repertoire of teaching techniques, and enliven your grades preK – 12 classrooms, while earning professional development and graduate credit. **Visit chicagobotanic.org/teacherprograms for more detailed program descriptions and to register for classes.**

Unless otherwise indicated, all programs are from 8:30 a.m. to 4:30 p.m. at the Garden.

Become a teacher member and receive a 20 percent discount on all professional development courses over \$100.

Spring 2014

New! Introduction to Green Technology

Join us in exploring green technologies and concepts in environmental science geared to engage students in inquiry learning and engineering. Learn to integrate issues that have strong technology and engineering connections such as resource use, alternative energies, green roofs, water conservation, and more into your existing curriculum. Discover how you and your students can make your classroom and school more environmentally friendly.

Saturday, March 15, at the Chicago Botanic Garden
\$80

Grade level: 3 – 12
CPDU credit: 7

The Green & Growing Classroom

Growing plants in the classroom provides a variety of ways to make interdisciplinary connections and to incorporate Next Generation Science Standards. Learn a variety of tips, techniques, and tools for easy indoor gardening and discover activities and ideas for using the plants you and your students grow across the curriculum.

Saturday, April 5, at the Chicago Botanic Garden
\$80

Grade level: PreK – 12
CPDU credit: 7

Discovering Aquatic Ecosystems

Explore the amazing aquatic ecosystems found right here in the Chicago region. From rivers to wetlands, ponds to lakes, learn about the adaptations, life cycles, and interactions of aquatic plants and animals, the importance of aquatic ecosystems, and the impacts that humans have on them. Discover simple techniques and easy-to-make tools while sampling the waters at both the Chicago Botanic Garden and the Grove and comparing what you find.

Saturday, May 10, at the Chicago Botanic Garden

Saturday, May 17, at the Grove National Historic Landmark

\$150 (20 percent discount for Educator Members)

Grade level: K – 12
CPDU credit: 15, Lane credit: 1 (pending CPS approval),
Graduate credit (additional fee): 1

Illinois Department of Natural Resources ENTICE: Schoolyard Wildlife Habitat Development

How's your habitat? Join us to learn how you and your students can take action to improve wildlife habitat on your school grounds. Learn basic habitat design and development techniques and assess what is already on the school grounds and what might be missing. We'll discuss utilizing the habitat to the support the school curriculum. Become aware of grant opportunities and obtain supplemental materials to help you get started with your own schoolyard habitat development.

Saturday, May 31, at the Chicago Botanic Garden
9 a.m. to 3:30 p.m.

\$10

Grade level: K – 12
CPDU credit: 6

Summer 2014 One- and Two-Day Programs

16th School Gardening Conference: The Next Generation of School Gardening

Whether you're just getting started or working with an established school garden, this conference is for you. Presenters will provide tips on plant selection and care, with hands-on demonstrations of techniques for working with soil and plants while making connections to your curriculum. This year's conference will highlight ways to use gardening to support Common Core and Next Generation Science Standards across grade levels.

Saturday, June 28, at the Chicago Botanic Garden
\$110

Grade level K – 12
CPDU credit: 7

Lane & Graduate credit available if combined with School Garden Road Trip (below)

School Garden Road Trip

Pack a lunch and join us on a tour of school gardens in the Chicago area. Learn directly from the schools about their challenges and success and how their teachers use the gardens to enliven their curriculum. Explore school garden themes and techniques and ideas for using school gardens to make cross-curricular connections. The bus will leave from the Garden at 8 a.m. and make stops in the city to pick up other participants.

Saturday, July 13, leaving from the Chicago Botanic Garden

\$75

Grade level: K – 12
CPDU credit: 7

Teachers who attend both the School Gardening Conference and the School Garden Road Trip are eligible 1 Graduate credit (additional fee).

Investigating Plants and Gardens with Students with Special Needs

Come join us for a two-day workshop focused on how to engage students with developmental differences in plant exploration. Learn about topics like horticultural therapy, plant adaptations, pollination, and more using multisensory, cross-curricular activities and lessons. Special attention will be given to adapting the Common Core standards and Next Generation Science Standards for special education.

Tuesday, July 22, and Thursday, July 24

\$150 (20 percent discount for Educator Members)

Grade level: K – 12
CPDU credit: 15, Lane credit: 1 (pending CPS approval),
Graduate credit (additional fee): 1

Celebrate Nature with Infants and Toddlers

Nature education for our youngest explorers includes bringing the outside in and experiencing the outdoor environment in new ways. Come enjoy a day of indoor and outdoor fun. Participate in a scavenger hunt, take nature objects apart, put objects together in new ways, and explore nature with new eyes. This class is designed for early-intervention providers, day-care providers, parents, and anyone who works with infants to 3-year-olds, and is adaptable for preK educators.

Wednesday, August 6, at the Chicago Botanic Garden

\$85

Grade level: Birth – PreK
CPDU credit: 7, Early Intervention credit: TBD

Weeklong Summer Institutes

"STEMs" in Your Neighborhood

Local ecosystems provide a wealth of opportunities to address the Next Generation Science Standards with students. Join us for a weeklong exploration of how to use the urban environments, prairies, woodlands, and wetlands in this area to investigate topics such as plant needs, plant and animal interactions, adaptations, human impacts on the environment, and more.

Monday – Friday, June 23 – 27 at the Chicago Botanic Garden

\$285 (20 percent discount for Educator Members)

Grade level: K – 12

CPDU credit: 35, Lane credit: 2 (pending CPS approval), Graduate credit (additional fee): 2

Field Research for Educators

What is it like to work as a field biologist? Spend four days on an overnight field research trip where you'll learn from scientists about the environmental and human factors that affect local plant communities at Pierce Cedar Creek Institute in Michigan. Then spend three days at the Garden working with our education staff to translate your experiences into inspired science lessons for the classroom. The bus leaves the Garden at 8 a.m. on Monday and returns Thursday afternoon. The workshop continues the following week at the Garden. Travel, accommodations, and meals during the research trip portion are covered by the fee.

Monday – Thursday, July 7 – 10, leaving from and returning to the Chicago Botanic Garden
Monday – Wednesday, July 14 – 16, at the Chicago Botanic Garden

\$685

Grade level: 4 – 12

CPDU credit: 45, Lane credit: 3 (pending CPS approval), Graduate credit (additional fee): 3

Solving Problems with Native School Gardens: Earth Partnership for Schools Summer Institute

Earth Partnership for Schools (EPS) is an in-depth, hands-on curriculum that explores local ecosystems and the creation of a native school garden using cross-curricular activities and lessons. Learn about plant identification, native ecosystems, garden design, habitats, data collection and more. Registration preference is given to teacher teams of two or more participating staff from a school or school district. Tuition scholarships may be available to interested teachers. For more information and to request registration and tuition scholarship materials, please contact Becky Ammann at (847) 835-8253, or by e-mail at rammann@chicagobotanic.org.

July 21 – 25 and November 15 at Fullersburg Woods Nature Education Center
Monday – Friday & Saturday

\$250 Early-bird registration before February 15
\$285 February 15 and later

Lunch (optional): \$10

Grade level: K – 12

CPDU credit: 45, Lane credit: 3 (pending CPS approval), Graduate credit (additional fee): 3

Other Teacher Programs

Custom Workshops

Increase your understanding of plants and nature, build your repertoire of teaching techniques, and enliven your classrooms! The Chicago Botanic Garden offers a variety of standards-based professional-development workshops scheduled specifically for your group. Perfect for teacher institute days, curriculum meetings, or professional development, workshops can be held at your school or at the Garden. Teachers, administrative staff, and parent or neighborhood volunteers can all participate through active learning that models grade-appropriate techniques for integrating plant-based learning into the curriculum.

Workshop topics include Botany Basics, Schoolyard Ecology, Experimenting with Plants, Science and Literature, Kitchen Science, and Midwest Ecosystems, or suggest your own. Custom workshops are a minimum of two hours long and cost \$200 per hour for up to 30 teachers or \$300 per hour for 30 to 60 teachers. Please call Teacher Programs at (847) 835-8253 for more information or to schedule a custom workshop.

Gardening Courses

Windy City Harvest offers half-day and full-day workshops on growing plants indoors and outside. It's a great way to improve your home or school gardening skills. Visit chicagobotanic.org/windycityharvest/ for a complete list of topics and other information.

Free Classroom Resource Kits for Loan

The Regenstien School offers a variety of resource kits of learning materials from the Illinois Department of Natural Resources (IDNR) for educators to use in the classroom. Kits include Illinois Wild Mammals, Illinois Birds, Illinois Trees, Illinois Prairies, Illinois Insects and Spiders, Aquatic Illinois, and more. Borrowing a kit requires a \$50 deposit, which is refunded upon the return of the complete kit. For a list of all resources kits, kit availability, and/or to arrange for kit pickup, call (847) 835-8253.

Teachers make amazing discoveries about plants and nature during summer institutes.

Student Field Trips

Enrich your students' educational experience with a visit to the Garden. Choose from a variety of programs that feature plant and nature topics appropriate for specific grade levels. Guided and self-guided options are available. Visit chicagobotanic.org/ctl/fieldtrips for complete program information and to schedule your visit.

New! Orchid Winter Programs

From Valentine's Day to St. Patrick's Day, all guided programs will be immersed in the science and splendor of orchids and will visit the Garden's annual Orchid Show. Age-appropriate program topics range from plant parts to pollinators and meet the new Next Generation Science Standards. See grade level program listings for more information.

Homeschool Groups

We welcome you to register for field trips to the Garden. If your homeschool group includes a range of ages, please review our complete program descriptions online and select a program that best matches your group's grade level and knowledge base.

Guided Field Trips

Unless otherwise stated, programs cost \$120 per class of 30 students. Available dates and times vary with the program.

Guided programs are led by trained facilitators who will engage your students with hands-on activities. Students will learn about plants and habitats found at the Garden. Field trips include outdoor exploration activities, so please dress for the weather.

Visit chicagobotanic.org/ctl/fieldtrips for more detailed grade-specific program descriptions, applicable state standards, and to schedule your visit.



Guided Programs PreK – K

\$120 per class of up to 25 PreK students
Available Monday through Friday, 10 a.m. – noon
A 1:5 ratio of chaperones to students is required.

Discovering Plants

Become a junior botanist as you learn about the roles of plant parts! To experience plant parts in action, students will explore the Grunsfeld Children's Growing Garden (Early Fall/Spring), the Greenhouses (Late Fall/Winter), the new Orchid Show (Midwinter), or the Fruit & Vegetable Garden (Spring). Each student will pot a plant to take home.

Early Fall, Late Fall, Winter, Spring

New! Outrageous Orchids: Sensational Explorers

10 – 11:30 a.m.

Students will use their five senses to fully immerse themselves in the enchanting world of orchids. Through hands-on experiments, students will investigate orchid shape, color, and texture while also learning about the origins of chocolate and vanilla. Each student will leave with an orchid-themed craft or plant. Admission to seasonal orchid show is included.

February 17 – March 14

Guided Programs PreK – 2

\$120 per class of up to 25 PreK or 30 K – 2 students
Available Monday through Friday, 10 a.m. – noon
A 1:5 ratio of chaperones to students is required.

Trees and Trains

Learn how to identify evergreen tree families by touch and sight. Learn about their special adaptations to the change in seasons. Visit the enchanting Wonderland Express exhibition to see the trees and trains. Students will take home a special holiday craft.

Holiday

Guided Programs K – 2

\$120 per class of up to 30 students
Available Monday through Friday, 10 a.m. – noon
A 1:5 ratio of chaperones to students is required.

Surprising Seeds

What is inside a seed? As junior botanists, students learn about seed parts and how they work together to produce a new plant. After dissecting a seed, students will explore the Garden and pot their own seed to take home.

Early Fall, Late Fall, Holiday, and Winter

Garden Groceries

Students will discover the relationship between plant parts and the foods we eat. A Garden exploration to study living examples that are in season is included. Students pot an edible plant to take home.

Early Fall

Insect Investigations

There is more to life in the garden than just plants. Come see the Garden through insect eyes, learn about insect characteristics, and observe unique relationships between plants and insects. Students will pot a plant to take home.

Early Fall

A Walk in the Woods

Students will learn about woodland habitats and survey the Garden's woodland using their senses and will record their observations in a field book. Woodland programs take place outdoors in McDonald Woods. Please prepare your students for the weather.

Early Fall and Late Fall

New! Expedition Ecosystem: The Wonders of Soil

What roles does soil play in an ecosystem? Students will identify the components of healthy soil and come face-to-face with common soil-dwelling critters. Each student will leave with a potted plant.

Holiday and Winter

New! Outrageous Orchids: Plant Part Investigation

Discover why orchids are considered to be one of the most unique flowers in the world. Students will explore the life cycle of an orchid and discuss the scientific reasons behind the flower's shape, size, and color. Each student will leave with an orchid-themed craft or plant. Admission to seasonal orchid show is included.

February 17 – March 14

Spring Garden Explorers

Discovery stations around the Learning Campus make your visit an exciting outdoor experience investigating plants and creatures living in the Garden and in our lakes. Design and plant a garden bed in the Growing Garden and pot a plant to take home.

Spring

Guided Programs 3 – 5

\$120 per class of up to 30 students
Available Monday through Friday, 10 a.m. – noon
A 1:7 ratio of chaperones to students is required.

Flower Lab

Why do plants make flowers? As junior botanists, students learn about flower parts and how flowers, with pollinators' help, produce seeds. Students will pot a flower to take home and also look for flowers in the Garden.

Early Fall, Late Fall, Holiday, and Winter

Edible Botany

How are plant parts and their functions related to the foods we eat? A Garden exploration to study living examples that are in season is included. Students pot an edible plant to take home.

Early Fall

Pondering the Prairie

Students explore the prairie, focusing on plant adaptations and ecosystem interactions, by comparing two prairie types. Prairie programs take place outdoors in the Dixon Prairie.

Early Fall

Forest Fundamentals

Students find evidence of food chains and food webs throughout the woodlands, and learn about common woodland trees. They record their observations in a field journal. Woodland programs take place outdoors in McDonald Woods.

Early Fall and Late Fall

Plant Propagation

Clone a new plant from part of another one! Compare and experiment with some different methods of propagating plants as you learn about various ways plants reproduce. Plant a stem cutting to take home and watch the roots grow.

Late Winter

New! Outrageous Orchids: Peculiar Pollinators

From deceptive scents to vibrant colors, orchids have evolved to attract a wide variety of pollinating creatures. Through hands-on activities, students will experience a day in the life of an orchid pollinator as they test nectar sugar levels and identify attractive petal colors and scents. Each student will leave with an orchid-themed craft or plant. Admission to seasonal orchid show is included.

February 17 – March 14

Spring Garden Explorers

Discovery stations around the Learning Campus make your visit an exciting outdoor experience investigating plants and creatures living in the Garden and in our lakes. Design and plant a garden bed in the Grunsfeld Children's Growing Garden and pot a plant to take home.

Spring



Guided Programs 6 – 8

\$120 per class of up to 30 students
Unless otherwise stated, available Monday through Friday, 10 a.m. – noon
A 1:10 ratio of chaperones to students is required.

Ecosystem and Plant Adaptations

How do plants fit their place? Discover how plants have adapted to abiotic factors in an ecosystem. Student investigations include learning about the unique abiotic conditions that define many of the ecosystems of the world, including Illinois.

Early Fall, Late Fall, and Winter

New! Outrageous Orchids: The Mighty Rainforest

Step out of the classroom and into the rainforest! Using a variety of scientific tools, students will take an in-depth look at rainforest plant adaptations and critically analyze the relationships between biotic and abiotic factors within the biome. Each student will leave with an orchid-themed craft or plant. Admission to seasonal orchid show is included.

February 17 – March 14

Guided Programs 6 – 12

\$120 per class of up to 30 students
Unless otherwise stated, available Monday through Friday, 10 a.m. – noon
A 1:10 ratio of chaperones to students is required.

Water Quality

Students will learn about the aquatic ecosystem by collecting and testing water samples, identifying organisms that indicate water quality, and conducting a chemical assessment. Please prepare your students to be outside.

Early Fall and Spring

Photosynthesis Lab

Students will explore photosynthesis, investigating how and where it takes place, how plants obtain the materials necessary for it to occur, and its products.

Students will use scientific equipment to measure gas exchange in plants.

Holiday and Winter

Green Buildings

Visit the Daniel F. and Ada L. Rice Plant Conservation Science Center to learn about the conservation features of this remarkable building. Students will explore the green roof and create their own roof design.

Spring, Tuesdays and Thursdays

Guided Programs for Children with Special Needs

Bring your students to the Chicago Botanic Garden for a customized therapeutic program in the Buehler Enabling Garden outdoor classroom. These one-hour programs provide a guided, structured experience with nature and are designed for youth with special needs. If you find it difficult to travel with your students, please contact us to discuss possible programs delivered in your school. Call (847) 835-6801 to learn more about horticultural therapy for your students or to schedule a program.

K – 12
Monday through Friday
\$120 (includes all materials)
Maximum number of children: 15

Self-Guided Field Trips

Self-guided field trips allow students to explore while you lead them through the Garden. Register in advance and Garden staff will be available to discuss areas suited for any curricular topic, and reserve a self-guided activity backpack for your group.

Year-round
Monday through Friday
9 a.m. – 4:30 p.m.

\$30 per classroom (maximum 30 students)
No additional parking fee required

Self-Guided Activity Backpacks

Self-guided activity backpacks provide hands-on activities for teachers to lead while visiting the gardens. Reserve activity backpacks to enhance sensory experience in the Sensory Garden, explore Japanese culture and garden design in the Malott Japanese Garden, study plant adaptations in the Greenhouses, or to investigate the world of pollinators throughout the Garden. Each backpack includes all supplies for the activities for a group of 30 and can be checked out for either the morning (9 a.m. to noon) or the afternoon (12:30 to 3:30 p.m.).

Year-round
Monday through Friday
\$10 per class

Visit chicagobotanic.org/ctl/fieldtrips/selfguide.php for more information.

School Field Trips at a Glance

Age Group	Program	Early Fall 9/3-10/11/13	Late Fall 10/14-11/8/13	Holiday 12/2-12/20/13	Winter 2/14-4/11/14	Spring 4/21-6/6/14
PreK-K	Discovering Plants					
	Outrageous Orchids				2/17 – 3/14 only	
PreK - 2	Trees and Trains					
	K-2	Garden Groceries				
	Insect Investigations					
	A Walk in the Woods					
	Surprising Seeds					
	Ecosystem: The Wonders of Soil					
	Outrageous Orchids				2/17 – 3/14 only	
	Spring Garden Explorers					
Grades 3-5	Pondering the Prairie					
	Edible Botany					
	Forest Fundamentals					
	Flower Lab					
	Plant Propagation					
	Outrageous Orchids				2/17 – 3/14 only	
	Spring Garden Explorers					
Grades 6-8	Ecosystems and Plant Adaptations					
	Outrageous Orchids				2/17 – 3/14 only	
Grades 6-12	Water Quality					
	Green Buildings					
	Photosynthesis Lab					

Additional Field Trip Experiences

Wonderland Express

Visit an enchanting winter wonderland with twinkling lights and a magical indoor train. Model trains travel over bridges, under trestles, past waterfalls, and through more than 80 miniature versions of Chicago landmarks. Visit chicagobotanic.org/wonderland for more information about Wonderland Express.

November 28 – January 4
\$3 per person

Guided Walking Tours

Explore the Garden with an expert. Tours allow students to explore one garden in more depth. Choose from one of the following: English Walled Garden, Greenhouse (select one), Malott Japanese Garden, or the Daniel F. and Ada L. Rice Plant Conservation Science Center (recommended for high school students only).

Spring: April 21 through June 6
Tuesdays and Thursdays

30 minutes

\$80 classroom (maximum 30 students)
A 1:7 ratio of chaperones to students is required.

School Tram Tours

Embark on a delightful journey around the Garden. Your tram tour guide will show you things you might not notice on your own and invite you to search for clues to nature's secrets.

April 22 through October 25
\$2.50 per person
Offered at 10:30 and 11:15 a.m., noon, and 12:45 p.m.

Grades PreK, K – 2, or 3 – 6

30 minutes

Grades 7 – 12

35 minutes

Climb aboard for a narrated tram tour around the 2.6-mile perimeter of the Garden. Your tour guide will present highlights and history of this living museum, and share information about our research projects and conservation efforts.

Model Railroad Garden

Guide your students around our popular model railroad exhibition, where 7,500 square feet of miniature gardens and unique settings delight students and chaperones alike. Visit chicagobotanic.org/railroad for more information.

May 10 through October 26

\$3 per person

Butterflies & Blooms

Summer groups, visit our outdoor, screened butterfly exhibition, where students can encounter hundreds of live tropical butterflies from South America, Asia, North America, and Africa, as well as native species from Illinois. Visit chicagobotanic.org/butterflies for more information about Butterflies & Blooms.

June 1 through September 2

\$3 per person

The Orchid Show

Enjoy an eye-popping walk through the tropical and semi-tropical greenhouses and galleries to experience a colorful display of hundreds of different orchids.

February 17 through March 14

\$3 per person (fee for self-guided groups only; fee is covered in the program fee for guided groups)

Traveling Plant Teacher

Enrich your curriculum and have the Chicago Botanic Garden come to you! Choose from a variety of programs that feature plant topics appropriate for specific grade levels, including Trees in the Classroom in January and February for grades preK – K. All programs support Illinois Science Standards and include live plants brought from the Garden to study, as well as a plant for each student to keep.

December 2 – 20
January 27 – April 4

\$120 per class (maximum 30 students)
\$100 for each additional class on the same day

Schools located more than 20 miles from the Chicago Botanic Garden will be charged a \$50 mileage fee.

Trees in the Classroom

January & February

Through the use of scientific tools and hands-on exploration, students will discover the important role trees play in forest ecosystems right from their own classroom. Students will pot a plant to keep.

Visit chicagobotanic.org/ctl/outreach/ for more information about programs and scheduling.

Real-World Science Investigations in the Classroom

Project BudBurst

Join students and communities from across the country in collecting plant life-cycle data and entering it into our user-friendly database. Details, curriculum materials for grades K through 12, and data from past years are available at budburst.org. Project BudBurst is a collaboration between the Chicago Botanic Garden and the National Ecological Observatory Network. It is supported by grants from the National Geographic Education Foundation and National Aeronautics and Space Administration.



Science Career Continuum

Great Summer Science Experiences for Students

The Garden is committed to encouraging interest in the natural sciences and promoting careers in botany, horticulture, ecology, and conservation science. The Science Career Continuum offers qualified students in middle school through college a series of age-appropriate opportunities to learn about science and conservation at the Garden.

Science First

Science First is a free four-week summer program for Chicago Public School students currently in grades 7 through 9. While enjoying hands-on, nature-based science activities, indoor and outdoor investigations, and exposure to real scientists who work at the Garden, students improve their understanding of the scientific method and careers in science. Transportation and free lunch are provided. CPS teachers are encouraged to share registration materials with promising students. Visit chicagobotanic.org/sciencefirst for more information. Applications for summer 2014 are due on April 25.

College First

College First is an internship and field ecology course for CPS School students entering their junior or senior year in fall. Students get paid and earn college credit while studying field ecology, conducting a research project, and working with scientists at the Garden. Students meet monthly during the school year to learn more about preparing for college. Transportation is provided. CPS teachers are encouraged to share registration materials with promising students. Visit chicagobotanic.org/collegefirst for more information. Applications for summer 2014 are due on April 11.

Science First and College First are made possible by the generous support of an anonymous donor, the Paul M. Angell Family Foundation, Discover Financial Services, William J. Clancy Foundation, Institute of Museum and Library Services, ITW Foundation, JPMorgan Chase Foundation, Bertha Lebus Charitable Trust, Colonel Stanley R. McNeil Foundation, Harold M. and Adeline S. Morrison Family Foundation, Stanley Smith Horticultural Trust, Trillium Foundation, and the W.P. & H.B. White Foundation.

Research Experiences for Undergraduates

The Garden's Research Experiences for Undergraduates (REU) program is a full-time, ten-week research internship for college undergraduates conducting research in plant biology and conservation. Students earn a stipend and money for living expenses while they work with research scientists and graduate students from the Garden and Northwestern University. Professional-development and social activities are also included. Please visit cbgreu.org for more information.

The Garden's REU program is made possible by the generous support of the National Science Foundation.

Urban Agriculture

Growing Food and Opportunities for the Future

Teens and young adults in Cook and Lake County communities benefit from organic gardening programs that teach useful skills, encourage healthy living practices, and improve self-esteem.

Green Youth Farm / Urban Garden Lab

Each year, 70 students, ages 15 to 18, learn and practice sustainable urban agriculture year-round, while earning money for their efforts! Through this youth-development and work-readiness program, participants practice teamwork, gain job skills, and learn about science and the food system. Students from throughout Chicago are eligible to participate in programs based in the city, while students from low-income communities in Lake County are eligible for the Green Youth Farm, Lake County. Visit chicagobotanic.org/greenyouthfarm for more information.

Windy City Harvest

Windy City Harvest trains adults in sustainable horticulture and urban agriculture. Both are dimensions of the urban greening and healthy, affordable, local food movements to which the Chicago Botanic Garden has an institutional commitment.

Certificate Training

This nine-month college-credit certificate in organic vegetable production enrolls 15 to 20 students annually. Delivered by Garden staff at the Arturo Velasquez Institute, a Daley College campus, Windy City Harvest trains students in best practices for year-round gardening and sales of fresh vegetables. Graduates are now working in a range of full-time and seasonal jobs in the local horticulture and urban agriculture industry. Visit chicagobotanic.org/windycityharvest for more information.

Transitional Jobs

The transitional jobs component provides opportunities for individuals with multiple barriers to employment. Intended especially for VRIC graduates, this workforce training program is based in the social-enterprise model and trains approximately 30 adults annually in sustainable urban agriculture practices, work readiness and literacy skills, and green careers. Participants complete the Roots of Success job readiness curriculum and are encouraged to apply for the WCH certificate program. Windy City Harvest seeks out employment partners, such as Midwest Foods and FarmedHere, whose hiring practices consider VRIC graduates.

Major support for the Chicago Botanic Garden's Urban Agriculture programs is provided by the Beginning Farmer and Rancher Development Program of the National Institute of Food and Agriculture, USDA as well as the following: anonymous donors, After School Matters, J.R. Albert Foundation, Alvin H. Baum Family Fund, The Bank of America Charitable Foundation, BMO Harris Bank, Brinshore Development, City of Chicago Department of Family and Support Services, Elizabeth Morse Genius Charitable Trust, The Grainger Foundation, Leo S. Guthman Fund, Illinois Department of Commerce and Economic Opportunity, ITW, JPMorgan Chase Foundation, Kraft Foods Group, Midwest Foods, Polk Bros. Foundation, Prince Charitable Trusts, Savor Inc., Howard and Jackie Shapiro Foundation, Spear Family Charitable Fund, Steans Family Foundation, and the Woman's Board of the Chicago Horticultural Society.

Additional support is provided by anonymous donors, Walter and Karla Goldschmidt Foundation, George and Amanda Hanley Foundation, Kaplan Foundation Fund/Caro and Ed Kaplan, Lake Forest Garden Club, Walter S. Mander Foundation, Northern Trust Charitable Trust, the Albert Simon III Charitable Family Foundation, and the United States Department of Housing and Urban Development.

Also contributing are the Albers/Kuhn Family Foundation, Laurance Armour Memorial Trust at the Chicago Community Trust, Benefit Magic, LLC., Tom E. Dailey Foundation, First Bank of Highland Park Foundation, North Central Region Sustainable Agriculture Research and Education Program, North Shore Garden Club, Inc., Northfielders Garden Club, The Outdoor Foundation, Kathy and Grant Pick Fund, State Farm, Takiff Family Foundation, Walgreens, and three individual donors.

Horticultural Therapy

Cultivating Health and Well-being

Horticultural Therapy Services

Since 1977, the Garden's Horticultural Therapy Services Program has supported the establishment of horticultural therapy programs at healthcare and human service agencies serving schools, VA hospitals, people with disabilities, and older adults in the Chicago region. The program serves as a primary regional, national, and international resource for information while offering a full range of professional training opportunities. Also available are consulting services in barrier-free garden design, sensory landscaping, and horticultural therapy program planning. Visit chicagobotanic.org/therapy for more information.

Horticultural Therapy is supported by an endowment from the Buehler Family Foundation. Additional support is provided by the Abra Prentice Foundation, After School Matters, Albers/Kuhn Family Foundation, Blowitz-Ridgeway Foundation, and the Edmond and Alice Opler Foundation, as well as endowments established by the estate of Florence Rantz, the Kenilworth Garden Club, the Julien H. Collins and Bertha M. Collins Fund, and the Helen and Maurice Weigle Fund at the Chicago Community Trust.

The Chicago Botanic Garden's education and community programs are generously supported by The Brinson Foundation, HSBC, and Kemper Educational and Charitable Foundation.